

POLYGONACEAE

A NEW VARIETY OF *OXYGONUM ALATUM*

***Oxygonum alatum* Burch.**, Travels in the interior of southern Africa 1: 548 (1822). Type: South Africa, Griqualand West, *Burchell 2074* (K, holo.!; PRE!).

Annual herb, up to 0,5 m tall, much branched from the base. *Stems* prostrate, semi-erect or erect, longitudinally ridged, reddish purple at the base, sparingly or densely covered with white cup-shaped or elongated scales. *Ocrea* membranous, funnel-shaped, 6–9 mm long, greenish-white, covered with cup-shaped or elongated scales, lobed; lobes triangular, ending in a red or white rigid seta, 2–3,5 mm long. *Leaves* simple, fleshy, lanceolate, ovate or rhomboid, (14–) 17–85 (–125) × (2–) 4–25 mm, entire or shallowly to deeply lobed, the lobes usually further divided, acute, narrowing and tapering to a

short petiole, glabrous or covered with white cup-shaped or elongated scales especially along the midrib and margins. *Inflorescence* a long lax thyrse with fascicles of up to 4 flowers in the axils of ovate membranous bracts. *Flowers* hermaphrodite and male. *Perianth* pink or white, 5-cleft, the outer two segments keeled and mucronate, up to 7 mm long, glabrous or with a few cup-shaped or elongated scales. *Stamens* 8, inserted on the inner perianth; anthers bluish, 1 mm long; filaments white, 4 mm long, with a ring of cilia one-eighth from the base. *Styles* 3, joined for a third of their lengths; stigmas capitate. *Fruit* a nut, winged at the three angles, sometimes with small spreading prickles a third from the base, red or yellow-brown, glabrous or with a few scattered cup-shaped or elongated scales, 10–13 × 9–11 mm.

In semi-arid grassland and open woodland on red sandy soils, often locally common in disturbed places and under trees, in SWA/Namibia, Botswana, the western Transvaal and northern Cape Province.

Two varieties are recognized and are separated on the presence or absence of cup-shaped or elongated scales.

a. var. *alatum*

Oxygonum alatum Burch., Travels in the interior of southern Africa 1: 548 (1822); Meisn.: 38 (1856); Hook. f.: 14 (1880); Engl.: 6 (1888); Schinz: 57 (1896); Hiern: 902 (1900); Schinz: 870 (1901); Dinter: 58 (1909); C.H. Wr.: 460 (1912); Bak. & C.H. Wr.: 99 (1909); Burt-Davy: 167 (1926); R.A. Grah.: 165 (1957); Tikovsky & Merxm.: 3 (1969). Type: South Africa, Griqualand West, Burchell 2074 (K, holo.; PRE).

O. alatum var. *incisum* Sond.: 98 (1850), *ex descr.*

O. alatum var. *integrifolium* Sond.: 98 (1850), *ex descr.*, excl. syn. *O. dregeanum* Meisn.

O. alatum var. *marlothii* Engl.: 6 (1888); C.H. Wr.: 460 (1912). Type: Cape (British Bechuanaland), Kuruman, Marloth 1016 (BOL, iso.; GRA!, K!, SAM!).

Only cup-shaped scales are present scattered over the whole plant. Figure 11. Distribution and ecology more or less as for the species. Figure 12.

Vouchers: *Germishuizen* 2624 (PRE); 2674 (PRE, WIND); *Leistner* 1366 (NBG, PRE); *Lewis* 4204 (PRE, SAM, STE-U); *Maguire* 2225 (BOL, NBG, PRE, WIND).

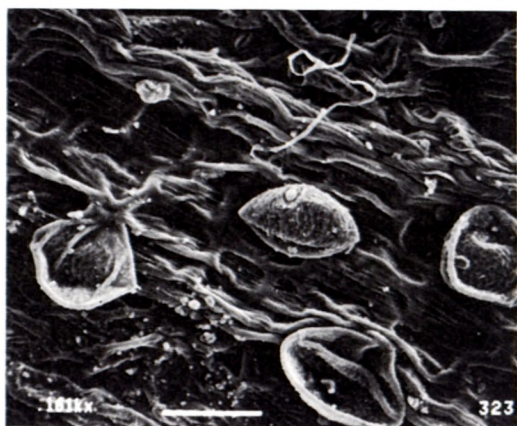


FIGURE 11.—*Oxygonum alatum* var. *alatum* (*Germishuizen* 2624, PRE). Cup-shaped scales on abaxial leaf surface, $\times 110$.

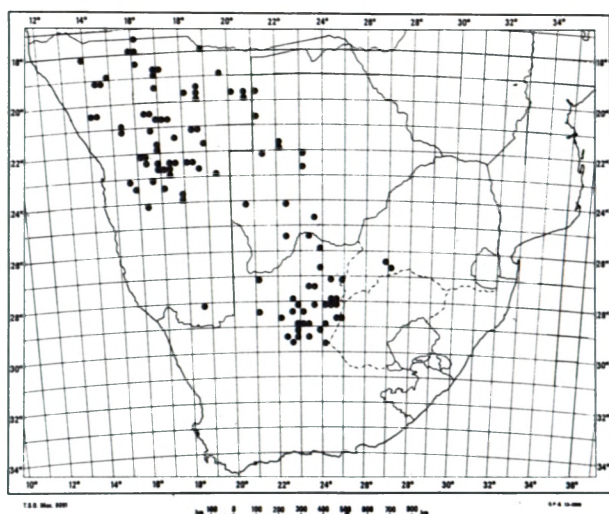


FIGURE 12.—Distribution of *Oxygonum alatum* var. *alatum* in southern Africa.

b. var. *longisquamatum* (*Germishuizen*, var. nov., a varietate typico (solum) squamis elongatis differt.

TYPE.—SWA/Namibia, near Oshandi 25 km SE of Oshikango, *R.J. Rodin* 9104 (WIND, holo.). Figure 13.

The whole plant is covered with both cup-shaped and elongated scales in varying density. Figure 14.

Found in northern South West Africa/Namibia and northern Botswana. Figure 15.

SWA/NAMIBIA.—1715 (Ondangua): Ogongo Agricultural College (—CB), *E.J. van Jaarsveld* 2862 (NBG). 1716 (Enana): Oshandi, 25 km SE of Oshikango (—AC), *R.J. Rodin* 9104 (WIND); Oshigambo (—CC), *S. Soini* s.n. (PRE, WIND). 1920 (Tsumkwe): 6 km E of Tsumkwe (—DA), *W. Giess*, *J.S. Watt* & *J. Snyman* 11024 (WIND); 16 km E of Tsumkwe (—DA), *W. Giess*, *J.S. Watt* & *J. Snyman* 11171 (WIND).

BOTSWANA.—1823 (Siambusso): Molapo, 2 km NW of James Camp (—CB), *D.T. Williamson* 81 (PRE). 1926 (Tsekanyani): Nata area at Nata River Delta (—CD), *J.F. Ngoni* 488 (PRE). 2124 (Rakops): Maun-Rakop, 16 km W of Rakop (—AB), *H.J. van Rensburg* B4099 (PRE); Kalatraverse, 12 km W of eastern boundary of Central Kalahari Game Reserve (—AC), *A.R. Kreulen* 644 (PRE). 2125 (Lothlekane): Orapa (—AD), *O. Kerfoot* 7752 (PRE). 2126 (Tlada Mabeli): Tlada Mabeli-Masu area, near Soa Pan (—AA), *J.F. Ngoni* 308 (PRE).

The epithet *longisquamatum* refers to the elongated scales scattered over the whole plant, which can be seen with the naked eye.



FIGURE 13.—Holotype of *Oxygonum alatum* var. *longisquamatum* *Germishuizen*.

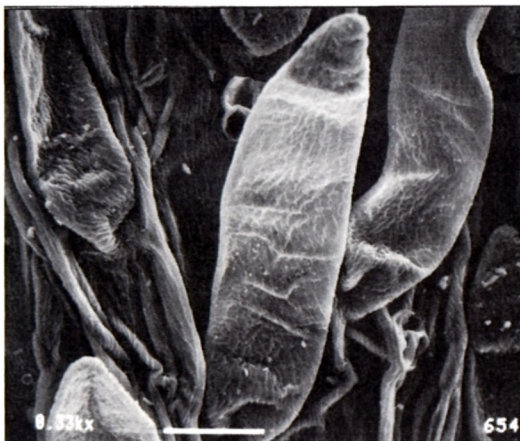


FIGURE 14.—*Oxygonum alatum* var. *longisquamatum* Germishuizen (Giess 11171, WIND). Elongated scales present on stem surface, $\times 230$.

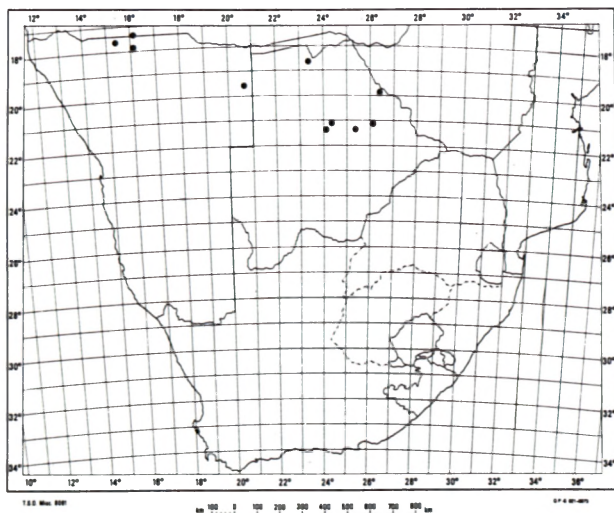


FIGURE 15.—Distribution of *Oxygonum alatum* var. *longisquamatum* in southern Africa.

ACKNOWLEDGEMENTS

I would like to thank Mrs S. Perold for helping with the SEM work, Mrs A. Romanowski for the photographs and Dr H.F. Glen for translating the diagnosis into Latin.

REFERENCES

- BAKER, J.G. & WRIGHT, C.H. 1909. Polygonaceae. In W.T. Thiselton-Dyer, *Flora of tropical Africa* 6,1: 99–103. Reeve, Kent.
- BURCHELL, W.J. 1822. *Travels in the interior of southern Africa* 1: 548. Longman, Hurst, Rees, Orme & Brown, London.
- BURTT DAVY, J. 1926. Polygonaceae. *A manual of the flowering plants and ferns of the Transvaal with Swaziland, South Africa* 1: 167–168. Longmans, Green, London.
- DINTER, K. 1909. *Deutsch-Südwest-Afrika Flora forst- und landwirtschaftliche Fragmente* : 58. Weigel, Leipzig.
- ENGLER, A. 1888. *Plantae marlothianae*. Ein Beitrag zur Kenntnis der Flora Südafrikas. *Botanische Jahrbücher* 10:6.
- GRAHAM, R.A. 1957. A revision of *Oxygonum*. *Kew Bulletin* 1: 145–172.
- HIERN, W.P. 1900. Polygonaceae. *Catalogue of the African plants collected by Dr Friedrich Welwitsch in 1853–1861*: 902. London.
- HOOKE, J.D. 1880. *Hooker's icones plantarum* 14: 14, t. 1321. Williams & Norgate, London.
- MEISNER, C.F. 1856. Polygonaceae. In A. de Candolle, *Prodromus systematis universalis regni vegetabilis* 14: 1–186. Paris.
- SCHINZ, H. 1896. Polygonaceae. Die Pflanzenwelt Deutsch-Südwest-Afrikas. *Bulletin de l'Herbier Boissier* 4, App. 3: 56–57.
- SCHINZ, H. 1901. Polygonaceae. *Bulletin de l'Herbier Boissier* sér. 2,1: 869–872.
- SONDER, O.W. 1850. Polygonaceae. *Linnaea* 23:98.
- TIKOVSKY, H. & MERXMÜLLER, H. 1969. Polygonaceae. In H. Merxmüller, *Prodromus einer Flora von Südwestafrika* 23: 1–10. Cramer, Lehre.
- WRIGHT, C.H. 1912. Polygonaceae. In W.T. Thiselton-Dyer, *Flora capensis* 5,1: 459–482. Reeve, London.