

FABACEAE

A NEW SPECIES OF *INDIGOFERA* FROM THE SOUTHERN CAPE

Indigofera thesioides J. K. Jarvie & C. H. Stirton, sp. nov., affinitate incerta.

Suffrutex porrectus vel suberectus usque 0,4 m altus, dense ramosus, cinereus, omnino strigulis adpressis instructus. *Stipulae* liberae usque 1 mm longae, anguste triangulares. *Folia* trifoliolata, lateralia mox caduca; anguste obovata conduplicata, apice recurvato mucronatoque, basi cuneata. *Inflorescentia* 10–15-flora. *Flores* 5 mm longi, rosei, omnes bractea rigida patenti 0,5 mm longa subtenti. *Calycis tubus* quam dentibus brevior. *Vexillum* late ovatum dorso striguloso. *Alae* 4 mm longae. *Carinae* 4,0–4,5 mm longae clavula superficie exteriori centraliter disposita deorsum aspicienti. *Antherae* apiculatae squamis carentibus. *Pistillum* brevipedicellatum, ad apicem basinque compressum lateribusque rotundatis. *Fructus* ferruginobrunnei pilis albis adpressis obtecti. Figure 3.

TYPE. — Cape, 3322, (Oudtshoorn): Meiring's Poort (–BC), 20.6.1965, *Acocks 18288* (K, holo.!; PRE, iso.!).

Sprawling to semi-erect shrublet up to 0,4 m tall, densely twiggy, branching off from the basal stock; greyish, appressed strigulose all over. *Stipules* free, up to 1 mm long, narrowly triangular. *Leaves* trifoliolate, laterals rapidly caducous; 4–5 × 0,5–1,0 mm, narrowly obovate, apex recurved mucronate, base cuneate, conduplicate, densely appressed strigulose on both surfaces. *Petiole* 1 mm long; petiolules very short. *Inflorescence* 25–35 mm long, 10–15-flowered; peduncle 7–8 mm long. *Flowers* 5 mm long, pink, each subtended by a stiff, patent, 0,5 mm long, cadu-



FIGURE 3. — Holotype of *Indigofera thesioides*, *Acocks 18288*.

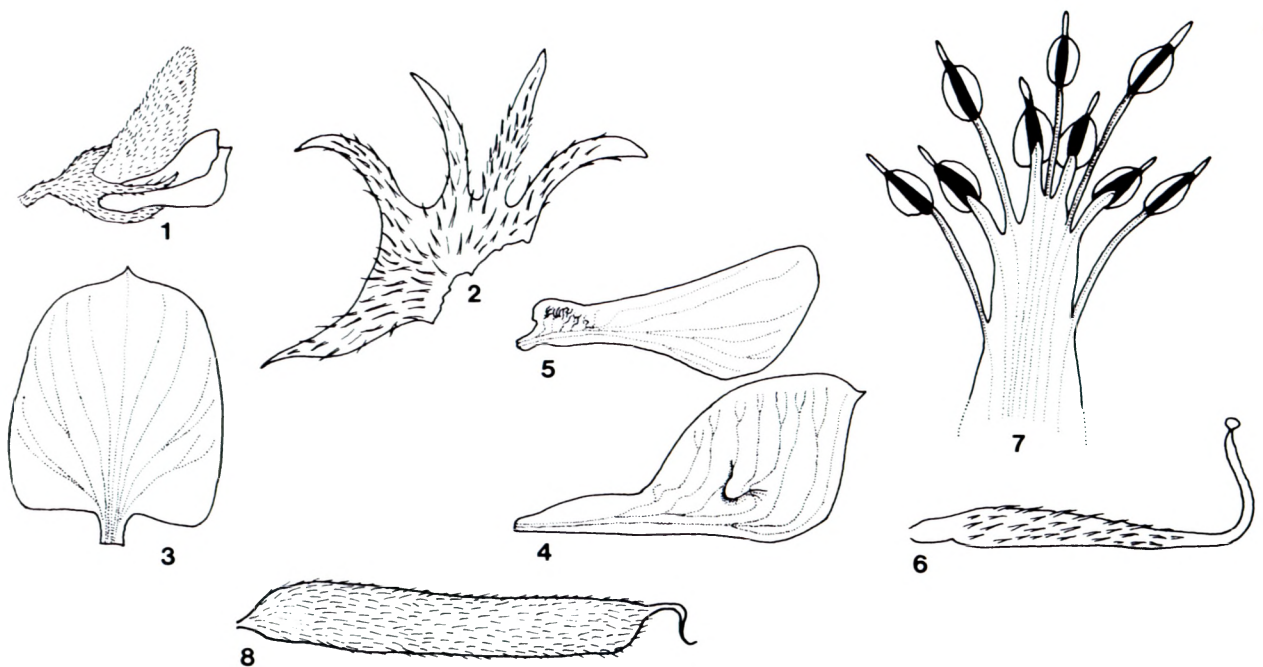


FIGURE 4. — *Indigofera thesioides*. 1, flower, × 6; 2, calyx opened out, × 10; 3, standard, × 12; 4, keel petal, × 12; 5, wing petal, × 12; 6, pistil, × 12; 7, apex of the staminal sheath, × 30; 8, fruit, × 7.

cous bract; pedicel < 1 mm long. *Calyx* 3,0–3,5 mm long; tube shorter than the teeth; keel tooth 0,5 mm longer than the rest, narrowly triangular, densely covered in appressed biramous hairs. *Standard* 5 × 3,5 mm, broadly ovate, back of standard strigulose, claw short, auricles scarcely developed, apex somewhat mucronate; appendages absent. *Wing petals* 4 × 2 mm, ± length of the keel blades, auriculate. *Keel blades* 4,0–4,5 × 2,0–2,5 mm, peg situated centrally on the outer surface and pointing downwards. *Androecium* 4 mm long, vexillar stamen free; anthers uniform, < 0,5 mm wide, apiculate, anthers on long thin filaments basifixed, anthers on short thickened filaments dorsifixed; scales absent. *Pistil* 4 mm long; ovary 3 mm long, shortly stalked, flattened on

top and bottom, sides rounded, narrowly oblong; style upcurved, height of curvature 1,5 mm; stigma capitate. *Fruit* 10–15 × 2 mm, reddish brown and covered in white appressed hairs. *Seeds* unknown. Figure 4.

This rare species is found in the upper margins of Spekboomveld on steep rocky slopes and in transitional fynbos. It occurs at about 700 m altitude. Flowering takes place in June.

CAPE. — 3322 (Oudtshoorn): Meiring's Poort (–BC), 20.6.1965, *Acocks* 18288 (K, PRE); 4,2 miles WNW of Camfer Station (–CD), 22.12.1962, *Acocks* 23256 (K, PRE).