

LILIACEAE

NOTES ON *KNIPHOFIA*

***Kniphofia ichopensis* Schinz var. *aciformis* Codd**, var. nov., a typo speciei foliis acicularibus differt.

TYPE. — Natal, Kamberg, *F. B. Wright* 2 (PRE, holo.; NU, iso.). Figure 5.

In var. *aciformis* the leaves differ conspicuously from normal *K. schinzii* in being acicular, up to 200 mm long and 0.5–1 mm in diameter, and in being produced in dense tufts of 20–30 leaves from which one or two peduncles may be produced. The leaves are surrounded at the base by numerous fibrous leaf-bases persisting from previous seasons. The leaf margins are inrolled and are minutely denticulate. In the typical variety the leaves are about 6–8 per peduncle, flat with a distinct keel and soft in texture, 500–800 mm long and 5–10 mm broad.

The perianth and bract characters of var. *aciformis* and var. *ichopensis* are almost identical and for this reason the new entity is placed as a variety of *K. ichopensis*. The leaves of var. *aciformis* are, however, quite unlike any other member of the genus and further investigation may indicate that it is worthy of separate specific status. At present it is known from only the three gatherings listed below, all of which fall within the distribution range of typical *K. ichopensis*. No specimens with leaves intermediate in character between var. *aciformis* and var. *ichopensis* have been seen.

NATAL. — 2929 (Underberg): Kamberg area (–BC), flowering 14.11.1959, *F. B. Wright* 2 (PRE); flowering 28.11.1974, *F. B. Wright* 1961 (NU); Mahwaqa (Marwaga) Mtn. near Bulwer (–DC), flowering 28.12.1980, *M. A. Rennie* 1193 (NU).

***Kniphofia angustifolia* (Bak.) Codd**, stat. nov.

K. natalensis Bak. var. *angustifolia* Bak. in Fl. Cap. 6: 281 (1896). Type: Natal, Tabamhlope Mtn. *Evans* 411 (K. holo.; NH, PRE). Figure 6.

K. rufa sensu Codd in *Bothalia* 9: 434 (1969).

In my revision of the South African species in *Bothalia* 9: 434 (1969), the name *K. rufa* Bak. was adopted with some hesitation for a group of specimens from the Natal midlands and foothills of the Drakensberg with slender, lax inflorescences (perianth 20–30 mm long) and narrow, grass-like leaves, 2–5 mm broad.

At the time it was pointed out that the type of *K. rufa* in Herb. Kew was possibly of hybrid origin and was not matched exactly by any specimens collected in the wild state. The inflorescence is denser than in the wild plants and the leaves are 8 mm broad. The original plant was grown by Max Leichtlin in his nursery at Baden-Baden and forwarded to Kew in June 1899. It was figured and described in *Curtis's Botanical Magazine* t. 7706 (1900). The illustration shows a medium-lax inflorescence of yellow flowers about 24 mm long, tinged with red in the bud stage. Since the 1969 revision was published, no specimens have been collected which are a good match of the type of *K. rufa* and it is proposed to place *K. rufa* as an insufficiently known entity until matching material is forthcoming from naturally growing plants.

The type of *K. angustifolia* has a lax inflorescence with creamy-white flowers about 20 mm long, and leaves 2–3 mm broad. The present concept of the



FIGURE 5. — *Kniphofia ichopensis* var. *aciformis*, holotype in PRE.

species includes plants with flowers varying in length from 19–30 mm and in colour from creamy-white to yellow or coral-red. There is some association between perianth colour and length, with the coral-red flowers tending to be longer than cream or yellow flowers. It seems possible that the coral-red and orange-red colour may be derived from hybridization with *K. triangularis*, which has small dense inflorescences of coral-red to orange-red flowers 24–35 mm long. *K. triangularis* also occurs in the foothills of the Natal Drakensberg and apparent hybridization between this species and *K. fibrosa* Bak. has been noted by recent collectors such as Mrs M. A.

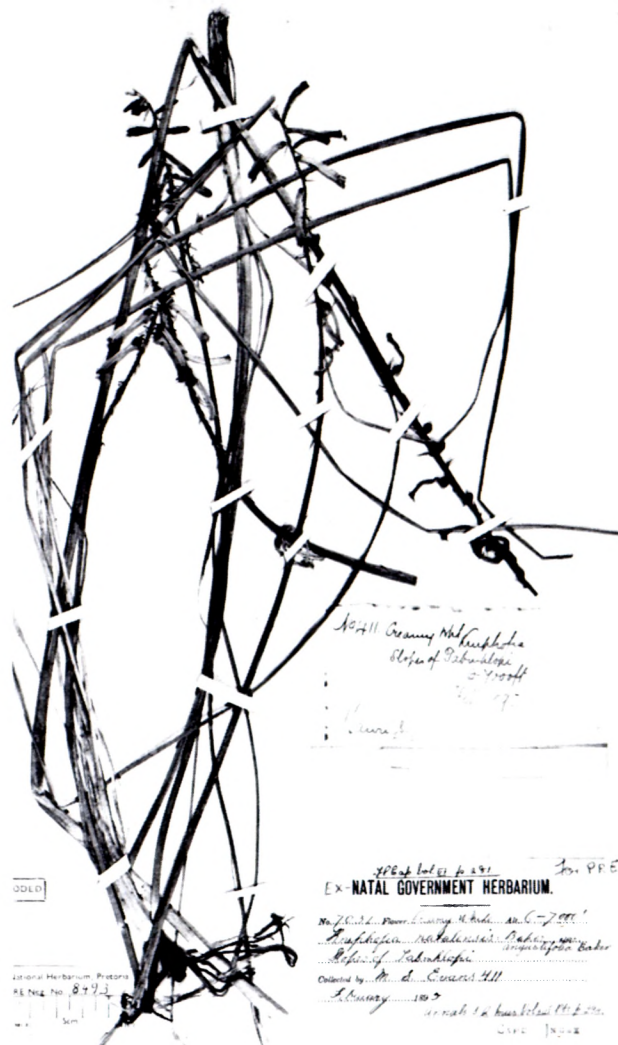


FIGURE 6. — *Kniphofia angustifolia*, isotype in PRE.

Rennie on Mahwaqa Mtn near Bulwer and by O. M. Hilliard and B. L. Burt at Bushman's Nek.

REFERENCES

- BAKER, J. G. 1896. Liliaceae. *Flora capensis* 6: 281.
 BAKER, J. G. 1900. *Kniphofia rufa*. *Curtis' Botanical Magazine*: t. 7706.
 CODD, L. E. 1969. The South African species of *Kniphofia* (Liliaceae). *Bothalia* 9: 363–512.