

LOCALITY INDEX.

The list of localities has been compiled with the assistance of Mr. L. J. Kresfelder. Thanks are due to officials of the Forestry Department for information about forest reserves and plantations, and to Dr. J. C. F. Hopkins for locating places in Rhodesia. Senhor M. G. Beatriz of the Department of Agriculture, Lourenço Marques, has been very helpful in connection with the geography of the colony of Moçambique, of which territory only very poor maps are available. The colony is divided into four provinces: Sul do Save, Manica e Sofala, Quelimane and Porto Amelia. Each province is divided into districts and each district comprises a number of minor divisions named in Portuguese Concelhos and Circumscrições, the former more important and less numerous than the latter. Names of places in Moçambique, therefore, are followed by the name of the district, with that of the Concelho or Circumscrição in brackets, thus:—

Chai-Chai Lourenço Marques (Gaza) Sul do Save, Moçambique
indicates that Chai Chai is in the Concelho de Gaza of the district of Lourenço Marques; province of Sul do Save, Moçambique.

The letters W, M, or E after districts of the Cape Province, indicate in which map—the Western, Midland or Eastern section—of the Cape Province the district is to be found.

It must be understood that the locality index is intended to be used only in connection with the list of species. Place names, especially those of farms, are often repeated in different parts of the country, and the general use of this index might be misleading.

For drafting maps showing districts in the various territories and provinces I am indebted to Miss R. Brown, who also compiled the extended vegetation map from information supplied by Dr. Pole Evans.

<i>Locality.</i>	<i>District.</i>	<i>Province or Territory.</i>
Aapies River.....	Pretoria.....	Transvaal.
Acornhoek.....	Pilgrims Rest.....	Transvaal.
Acton Homes.....	Bergville.....	Natal.
Addo.....	Uitenhage.....	Cape M.
Addo Bush.....	Uitenhage.....	Cape M.
Adelaide.....	Adelaide.....	Cape E.
Aiais—see Airas.		
Airas.....	Keetmanshoop.....	South-West Africa.
Albertinia.....	Riversdale.....	Cape M.
Alberton.....	Germiston.....	Transvaal.
Alexander Bay.....	Namaqualand.....	Cape W.
Alexandria.....	Alexandria.....	Cape E.
Alice.....	Victoria East.....	Cape E.
Alicedale.....	Albany.....	Cape E.
Aliwal North.....	Aliwal North.....	Cape E.
Alkmaar.....	Nelspruit.....	Transvaal.
Allerton.....	Pietermaritzburg.....	Natal.
Alpha (near Olifantsrivier Dam).....	Clanwilliam.....	Cape W.
Amabele.....	Kingwilliamstown.....	Cape E.
Amalinda.....	East London.....	Cape E.
Amandas.....	Mazoe.....	S. Rhodesia.
Amanzi.....	Uitenhage.....	Cape M.
Amanzimtoti.....	Durban.....	Natal.
Amatikulu.....	Mtunzini.....	Natal (Zululand).
Amatola Mts.....	Kingwilliamstown.....	Cape E.
Amersfoort.....	Carolina.....	Transvaal.
Amsterdam.....	Ermelo.....	Transvaal.
Andriesfontein.....	Kuruman.....	Cape (Griqualand West).
Angoche Is.....	Nampula (Antonio Enes).....	Niassa, Moçambique.
Angra Pequena.....	Lüderitz.....	South-west Africa.
Appelsbosch.....	New Hanover.....	Natal.
Arcadia, Pretoria.....	Pretoria.....	Transvaal.
Arcturus.....	Salisbury.....	S. Rhodesia.
Aris Drift, see Arris Drift.		

<i>Locality.</i>	<i>District.</i>	<i>Province or Territory.</i>
Armadillo Creek.....	Vryburg.....	Cape (Griqualand West).
Armoedsvlakte.....	Vryburg.....	Cape (Griqualand West)
Arris Drift.....	Namaqualand.....	Cape W.
Ashburton.....	Pietermaritzburg.....	Natal.
Ashbury.....	Pretoria.....	Transvaal.
Assegai Bosch.....	Humansdorp.....	Cape M.
Assegai Bush—Assegai Bosch.		
Athol.....	Ermelo.....	Transvaal.
Auasberge.....	Windhoek.....	South-west Africa.
Auckland Forest.....	Victoria East.....	Cape E.
Aughrabies Falls (Orange R.).....	Gordonia.....	Cape (East Griqualand).
Auros, near Otavi.....	Grootfontein.....	South-west Africa.
Avondale.....	Salisbury.....	Southern Rhodesia.
Avontuur.....	Uniondale.....	Cape M.
Aylesby.....	Albany.....	Cape E.
Baakens River Valley.....	Port Elizabeth.....	Cape M..
Baale.....	Lourenço Marques (Manhiça)....	Sul do Save, Moçambique.
Badfontein.....	Lydenburg.....	Transvaal.
Bains Kloof.....	Wellington-Worcester.....	Cape W.
Balfour.....	Stockenström.....	Cape E.
Balfour.....	Heidelberg.....	Transvaal.
Balgowan.....	Lions River.....	Natal.
Balmoral.....	Knysna.....	Cape M.
Bambamyoke Forest.....		Cape E.
Bandolier Kop.....	Pietersburg.....	Transvaal.
Banhoek.....	Stellenbosch.....	Cape W. . .
Banket.....	Lomagundi.....	S. Rhodesia.
Bankop.....	Ermelo.....	Transvaal.
Bantry Bay.....	Cape.....	Cape W.
Barberton.....	Barberton.....	Transvaal.
Barchfield' (Heeg).....	Lydenburg.....	Transvaal.
Barclayville.....	Nelspruit.....	Transvaal.
Barkly West.....	Barkly West.....	Cape (Griqualand West).
Barrydale.....	Swellendam.....	Cape W.
Basche (Drège) = Bashee River.		
Bashee River (lower reaches).....	Elliotdale-Willowvale.....	Cape E.
Bassonsdrift.....	Gordonia.....	Cape (Griqualand West).
Bathurst.....	Bathurst.....	Cape E.
Baviaans Kloof (old name for Genadendal, q.v.)		
Baviaans Poort.....	Pretoria.....	Transvaal.
Baviaans River.....	Bedford.....	Cape E.
Baziya.....	Umtata.....	Cape E.
Bazuja, see Baziya.		
Beatrice.....	Hartley.....	S. Rhodesia.
Bedford.....	Bedford.....	Cape E.
Beestekraal.....	Waterberg.....	Transvaal.
Begha River Valley.....	Peddie.....	Cape E.
Beginsel.....	Bethal.....	Transvaal.
Beira.....	Beira.....	Manica e Sofala, Moçambique.
Belfast.....	Belfast.....	Transvaal.
Bellair.....	Durban.....	Natal.
Bellville.....	Bellville.....	Cape W.
Belmont Valley.....	Albany.....	Cape E..
Belvidere.....	Knysna.....	Cape M.
Berea, Durban.....	Durban.....	Natal.
Bembesi.....	Bubi.....	S. Rhodesia.
Benaauwheidsfontein.....	Kimberley.....	Cape (Griqualand West).
Bergplaats.....	George.....	Cape M.
Berg Rivier.....	Wellington.....	Cape W.
Berlin.....	Kingwilliamstown.....	Cape E.
Bermolli.....	Kimberley.....	Cape (Griqualand West).
Besters Hoek.....	Somerset East.....	Cape M.
Bethal.....	Bethal.....	Transvaal.

<i>Locality.</i>	<i>District.</i>	<i>Province or Territory.</i>
Bethanie.....	Bethanie.....	South-west Africa.
Bethlehem.....	Bethlehem.....	Orange Free State.
Bezuidehouts River.....	Uitenhage.....	Cape M.
Biesjesvlei.....	Lichtenberg.....	Transvaal.
Bilene.....	Lourenço Marques (Bileni).....	Sul do Save, Moçambique.
Bindura.....	Mazoe.....	S. Rhodesia.
Birchleigh.....	Germiston.....	Transvaal.
Bisley.....	Pietermaritzburg.....	Natal.
Bitterfontein.....	Namaqualand.....	Cape W.
Bizana.....	Bizana (Pondoland).....	Cape E.
Blairmoor.....	Ermelo.....	Transvaal.
Blaauwkrans Kloof.....	Albany.....	Cape E.
Blaauwbergstrand.....	Cape.....	Cape W.
Blaauwkrantz.....	Knysna.....	Cape M.
Blaauwkrantzrivier.....	Knysna.....	Cape M.
Blauwvlei.....	Wellington.....	Cape W.
Bleakmore.....	Komgha.....	Cape E.
Bloemfontein.....	Bloemfontein.....	Orange Free State.
Bloubergstrand, see Blaauwbergstrand.		
Bloukransrivier, see Blaauwkrantzrivier.		
Bloukrans, see Blaauwkrantz.		
Blue Lilles Bush.....	Humansdorp.....	Cape M.
Bluff, Durban.....	Durban.....	Natal.
Blyvooruitzicht.....	Johannesburg.....	Transvaal.
Boboli.....	Lourenço Marques (Marracuene).....	Sul do Save, Moçambique
Boekenhout Kloof.....	Pretoria.....	Transvaal.
Bokfontein.....	Brits.....	Transvaal.
Bokkeveld.....	Ceres.....	Cape W.
Bokpoort (Nieuweveld).....	Beaufort West.....	Cape M.
Boksburg.....	Boksburg.....	Transvaal.
Boksburg North.....	Boksburg.....	Transvaal.
Bollellacarpu.....	Kuruman.....	Cape (Griqualand West).
Bon Accord.....	Pretoria.....	Transvaal.
Bonza Bay.....	East London.....	Cape E.
Boons.....	Rustenburg.....	Transvaal.
Bootmans Kop.....	Stellenbosch.....	Cape W.
Boroma.....	Tete (Tete).....	Manica e Sofala. Moçambique.
Borrowdale.....	Salisbury.....	S. Rhodesia.
Boschberg.....	Somerset East.....	Cape M.
Boschfontein.....	Brits.....	Transvaal.
Boschfontein.....	Waterberg.....	Transvaal.
Boschjemansrivier, see Bushmans River.		
Boschrand.....	Nelspruit.....	Transvaal.
Bosmans Crossing.....	Stellenbosch.....	Cape W.
Bosplaas.....	Pretoria.....	Transvaal.
Botany Bay (? old name for Bantry Bay).....	Cape.....	Cape W.
Botha's Hill.....	Camperdown.....	Natal.
Botha's Hill (Grahamstown).....	Albany.....	Cape E.
Bottelary.....	Stellenbosch.....	Cape W.
Bot Rivier.....	Caledon.....	Cape W.
Boulders.....	Nelspruit.....	Transvaal.
Brackels Kloof.....	Stellenbosch.....	Cape W.
Brackenfel.....	Stellenbosch.....	Cape W.
Bracken Hill.....	Knysna.....	Cape M.
Brak Kloof.....	Rustenburg.....	Transvaal.
Brakpan.....	Boksburg.....	Transvaal
Brandberg Mts., near Cape Cross.....	Omaruru.....	South-west Africa.
Branddraai.....	Lydenburg.....	Transvaal.
Brander's High Forest.....	Victoria East.....	Cape E.
Brandfontein.....	Bredasdorp.....	Cape W.
Brandfort.....	Brandfort.....	Orange Free State.
Brandvlei.....	Calvinia.....	Cape W.
Bredasdorp.....	Bredasdorp.....	Cape W.
Brede Rivier.....	Worcester.....	Cape W.
Brenton.....	Knysna.....	Cape M.

<i>Locality.</i>	<i>District.</i>	<i>Province or Territory.</i>
Breton.....	Wakkerstroom.....	Transvaal.
Breyton.....	Ermelo.....	Transvaal.
Brighton Beach.....	Durban.....	Natal.
Brits.....	Brits.....	Transvaal
Britstown.....	Britstown.....	Cape M.
Broken Hill.....	Manica.....	N. Rhodesia.
Bromley.....	Marandellas.....	S. Rhodesia.
Bronkhorstspuit.....	Pretoria.....	Transvaal.
Brooklands.....	Pilgrims Rest.....	Transvaal.
Brooklyn, Pretoria.....	Pretoria.....	Transvaal.
Browns Kuil Drift.....	Rustenburg.....	Transvaal.
Buccleuch.....	Pietermaritzburg.....	Natal.
Buffalo Bay.....	East London.....	Cape E.
Buffalo River.....	East London.....	Cape E.
Buffel.....	Lindley.....	Orange Free State.
Buffelsdrift.....	Pretoria.....	Transvaal.
Buffelshoek.....	Rustenburg.....	Transvaal.
Buffelsnek.....	Knysna.....	Cape M.
Buffelspan, Pillandsberg.....	Rustenburg.....	Transvaal.
Buffelspoort.....	Rustenburg.....	Transvaal.
Buffelsrivier, see Buffalo River.		
Buffelsvlei.....	Lydenburg.....	Transvaal.
Bulaki.....		Nyasaland.
Bulawayo.....	Bulawayo.....	S. Rhodesia.
Bultfontein.....	Middelburg.....	Cape M.
Bulwer.....	Polela.....	Natal.
Buraco.....	Mossamedes.....	Angola.
Burghersdorp.....	Albert.....	Cape E.
Burnera.....	Impendhle.....	Natal.
Bushmans River.....	Albany-Alexandria.....	Cape E.
Bushmans River Valley.....	Estcourt.....	Natal....
Butterworth.....	Butterworth.....	Cape E.
Buxton.....	Stockrenstroom.....	Cape E.
Cabo Delgado.....	Porto Amelia.....	Moçambique.
Cabo Negro.....	Mossamedes.....	Angola.
Caledon.....	Caledon.....	Cape W.
Caledon River.....	Boundary between.....	Orange Free State and Basutoland.
Calitzdorp.....	Oudtshoorn.....	Cape M.
Calvinia.....	Calvinia.....	Cape W.
Cambridge.....	East London.....	Cape E.
Camperdown.....	Camperdown.....	Natal.
Camps Bay.....	Cape.....	Cape W.
Cana.....	Berea.....	Basutoland.
Cango Caves.....	Oudtshoorn.....	Cape M.
Cango Valley.....	Oudtshoorn.....	Cape M.
Canicado.....	Lourenço Marques (Chibuto)....	Sul do Save, Moçambique
Cape Cross.....	Omaruru.....	South-west Africa.
Cape Flats.....	Wynberg.....	Cape W.
Cape Peninsula.....	Simonstown-Cape-Wynberg.....	Cape W.
Cape Point.....	Simonstown.....	Cape W.
Capetown.....	Cape.....	Cape W.
Caradoc's Bush.....	Knysna.....	Cape M.
Carlton.....	Middelburg.....	Cape M.
Carnarvon.....	Carnarvon.....	Cape M.
Caroca.....	Mossamedes.....	Angola.
Caroca River, nr. Cabo Negro.....	Mossamedes.....	Agnola.
Carolina.....	Carolina.....	Transvaal.
Cashel.....	Melsetter.....	S. Rhodesia
Castle Howard.....	Impendhle.....	Natal.
Catembe.....	Lourenço Marques.....	Sul do Save, Moçambique.
Catheart.....	Cathcart.....	Cape M.
Cathedral Peak.....	Bergville.....	Natal.
Cathkin Peak.....	Estcourt-Bergville.....	Natal.

<i>Locality.</i>	<i>District.</i>	<i>Province or Territory.</i>
Cato Ridge.....	Camperdown.....	Natal.
Cave Mt.....	Graaff Reinet.....	Cape M.
Vavendish.....	Durban.....	Natal.
Caverns, nr. Mont-aux-Sources.....	Bergville.....	Natal.
Caversham.....	Lions Rivers.....	Natal.
Cazimba.....	Mossamedes.....	Angola.
Cedara.....	Lions River.....	Natal.
Cedarmont.....	Standerton.....	Transvaal.
Ceres.....	Ceres.....	Cape W.
Chai-Chai.....	Lourenço Marques (Gaza).....	Sul do Save, Moçambique.
Chakari.....	Hartley.....	S. Rhodesia.
Chalasi.....	Lourenço Marques (Maputo).....	Sul do Save, Moçambique.
Champagne Castle.....	Estcourt.....	Natal.
Charter.....	Victoria.....	S. Rhodesia.
Chasedene.....	Pietermaritzburg.....	Natal.
Chase Valley.....	Pietermaritzburg.....	Natal.
Cherinda.....	Lourenço Marques (Manhica).....	Sul do Save, Moçambique.
Chibia.....	Mossamedes.....	Angola.
Chibuto.....	Lourenço Marques (Chibuto).....	Sul do Save, Moçambique.
Chilimanzi.....	Chilimanzi.....	S. Rhodesia.
Chilome.....	Lower Shire.....	Nyasaland (Southern Province).
Chimanimani Mts.....	Melsetter.....	S. Rhodesia.
Chinghanguanine.....	Lourenço Marques (Chibuto).....	Sul do Save, Moçambique.
Chiperone.....	Quelimane (Morrumbala).....	Zambesia, Moçambique.
Chippinga.....	Melsetter.....	S. Rhodesia.
Chirinda Forest.....	Melsetter.....	S. Rhodesia.
Chitanda River.....	Huila.....	Angola.
Chobela.....	Lourenço Marques (Magude).....	Sul do Save, Moçambique.
Chongueni.....	Lourenço Marques.....	Sul do Save, Moçambique.
Christiana.....	Bloemhof.....	Transvaal.
Chunespoort.....	Pietersburg.....	Transvaal.
Citrusdal.....	Clanwilliam.....	Cape W.
City Deep Mine.....	Johannesburg.....	Transvaal.
Clairmont.....	Durban.....	Natal.
Clanwilliam.....	Clanwilliam.....	Cape W.
Claremont.....	Wynberg.....	Cape.
Claremont, Pretoria.....	Pretoria.....	Transvaal.
Clarens.....	Bethlehem.....	Orange Free State.
Claridge.....	Pietermaritzburg.....	Natal.
Clocolan.....	Ficksburg.....	Orange Free State.
Cloudlands.....	Umtali.....	S. Rhodesia.
Clovelly.....	Simontown.....	Cape W.
Clydesdale.....	Umzimkulu.....	Cape E. (Griqualand East)
Clumber.....	Bathurst.....	Cape E.
Coalbrook.....	Heilbron.....	Orange Free State.
Coega River.....	Uitenhage.....	Cape M.
Coegapoort.....	Uitenhage.....	Cape M.
Cold Bokkeveld Mts.....	Ceres.....	Cape W.
Colenso.....	Estcourt.....	Natal.
Consolidated Main Reef G.M.....	Krugersdorp.....	Transvaal.
Commadagga.....	Somerset East.....	Cape E.
Commando Nek.....	Brits.....	Transvaal.
Compensation Beach.....	Lower Tugela.....	Natal.
Concession.....	Mazoe.....	S. Rhodesia.
Concordia.....	Knysna.....	Cape M.
Conney Glen.....	Knysna.....	Cape M.
Congella.....	Durban.....	Natal.
Conradie's Kloof.....	Rustenburg.....	Transvaal.
Constable.....	Laingsburg.....	Cape M.
Constantia.....	Wynberg.....	Cape W.
Cookhouse.....	Somerset East.....	Cape M.
Cookhouse Drift (Groot Visrivier).....	Somerset East.....	Cape M.
Cornforth Hill.....	Barkly West.....	Cape (Griqualand West).
Craddock.....	Craddock.....	Cape M.
Craigmore.....	Melsetter.....	S. Rhodesia.

<i>Locality.</i>	<i>District.</i>	<i>Province or Territory.</i>
Cramond.....	Pietermaritzburg.....	Natal.
Crecy.....	Waterberg.....	Transvaal.
Crown Mines.....	Johannesburg.....	Transvaal.
Cubango.....	Cubango.....	Angola.
Cyferbult.....	Rustenburg.....	Transvaal.
Daggafontein Mines.....	Springs.....	Transvaal.
Dalmantha.....	Carolina.....	Transvaal.
Dalton Bridge.....	Estcourt.....	Natal.
Dargle Road.....	Lions River.....	Natal.
Darling.....	Malmesbury.....	Cape W.
Darwendale.....	Lomagundi.....	S. Rhodesia.
Daspoort.....	Pretoria.....	Transvaal.
Dassenberg.....	Malmesbury.....	Cape W.
Dassie Krantz, Grahamstown.....	Albany.....	Cape E.
Davel.....	Ermelo.....	Transvaal.
Dawsons.....	Mazoe.....	S. Rhodesia.
De Aar.....	De Aar.....	Cape M.
Dealesville.....	Boshof.....	Orange Free State.
Debbe's Ravine.....	Pretoria.....	Transvaal.
De Beer's Rust.....	Pretoria.....	Transvaal.
De Deur.....	Vereeniging.....	Transvaal.
Deepwalls.....	Knysna.....	Cape M.
De Kol.....	Alexandria.....	Cape E.
De Kroon.....	Brits.....	Transvaal.
De Kuilen.....	Standerton.....	Transvaal.
Delmas.....	Springs.....	Transvaal.
Derdepoort.....	Pretoria.....	Transvaal.
Despatch.....	Uitenhage.....	Cape M.
Devil's Knuckles.....	Pilgrims Rest.....	Transvaal.
Devils Peak.....	Cape.....	Cape W.
De Wagendrift.....	Pretoria.....	Transvaal.
De Wildt.....	Brits.....	Transvaal.
'Diamond Fields'	Kimberley.....	Cape (Griqualand West).
Diepgat Kloof.....	Somerset West.....	Cape W.
Diepkloof nr. Dullstroom.....	Belfast.....	Transvaal.
Diep Rivier.....	Knysna.....	Cape M.
Diep Rivier.....	Wynberg.....	Cape W.
'Die Swartland'	Malmesbury.....	Cape W.
Disa Gorge, Table Mt.....	Cape.....	Cape W.
Dohne Peak.....	Stutterheim.....	Cape E.
Dombashawa.....	Salisbury.....	S. Rhodesia.
Dongola.....	Zoutpansberg.....	Transvaal.
Donkerbosch.....	Albany.....	Cape.
Donkerpoort.....	Pretoria.....	Transvaal.
Donnybrook.....	Polela.....	Natal.
Dooley.....	Bergville.....	Natal.
Doonside.....	Durban.....	Natal.
Doornbosch.....	Somerset East.....	Cape M.
Dordrecht.....	Wodehouse.....	Cape E.
Douglas.....	Herbert.....	Cape (Griqualand West).
Driefontein.....	Zoutpansberg.....	Transvaal.
Driepoort.....	Volkstrust.....	Transvaal.
Droogeheuvel.....	Prince Albert.....	Cape M.
Drummond.....	Camperdown.....	Natal.
Duikerfontein.....	Durban.....	Natal.
Duikervallei, Tygerberg.....	Cape.....	Cape W.
Duivelsberg, see Devils Peak.		
Duivelskantoer, Kaapsche Hoop.....	Nelspruit.....	Transvaal.
Duivelskloof.....	Letaba.....	Transvaal.
'Duivels Knackler', see Devils Knuckles.		
Duivelskloof.....	Letaba.....	Transvaal.
Duivels Knokler', see Devils Knuckles.		
Dukuduku.....	Hlabisa.....	Natal (Zululand).
Dullstroom.....	Belfast.....	Transvaal.

<i>Locality.</i>	<i>District.</i>	<i>Province or Territory.</i>
Dubrody Mission.....	Uitenhage.....	Cape M.
Duncairn.....	Pietermaritzburg.....	Natal.
Dundee.....	Dundee.....	Natal.
Dunkeld.....	Johannesburg.....	Transvaal.
Dunmurray.....	Vryburg.....	Cape (Griqualand West).
Durban.....	Durban.....	Natal.
Durban Roodepoort Deep G.M.....	Krugersdorp.....	Transvaal.
Durbanville.....	Bellville.....	Cape W.
Du Toits Kloof.....	Paarl.....	Cape W.
Dwarsriviershoek.....	Stellenbosch.....	Cape W.
East Ferry, Victoria Falls.....	Wankie.....	S. Rhodesia.
East London.....	East London.....	Cape E.
Ebb and Flow, Wilderness.....	George.....	Cape M.
Ebenazar.....	van Rhynsdorp.....	Cape W.
Edendale.....	Pietermaritzburg.....	Natal.
Edgehill.....	Estcourt.....	Natal.
Ediva.....	Huila.....	Angola.
Eikenhof.....	Johannesburg.....	Transvaal.
Ehlanzeni.....	Umsinga.....	Natal.
Elandsdrift.....	Rustenburg.....	Transvaal.
Elandshoek.....	Nelspruit.....	Transvaal.
Elandskop.....	Pietermaritzburg.....	Natal.
Elandsriver.....	Uitenhage.....	Cape M.
Elberta.....	Krugersdorp.....	Transvaal.
Eldorado.....	Lomagundi.....	S. Rhodesia.
Elgin.....	Caledon.....	Cape W.
Elim.....	Bredasdorp.....	Cape W.
Elim.....	Zoutpansberg.....	Transvaal.
Elliot.....	Elliot.....	Cape E.
Eloff.....	Springs.....	Transvaal.
Elsenburg.....	Stellenbosch.....	Cape W.
Emigratie.....		Swaziland.
Emmasdale.....	Heidelberg.....	Transvaal.
Empalanea.....	Huila.....	Angola.
Empangeni.....	Lower Umfolosi.....	Natal (Zululand).
Engcobo.....	Engcobo.....	Cape E. (Tembuland).
Engelbrechtsdrift.....	Pretoria.....	Transvaal.
Ennersdale.....	Estcourt.....	Natal.
Enon.....	Uitenhage.....	Cape M.
Enselberg.....	Marico.....	Transvaal.
Entabeni.....	Zoutpansberg.....	Transvaal.
Enterprise.....		S. Rhodesia.
Entumeni.....	Eshowe.....	Natal (Zululand).
Equeefa.....	Umzinto.....	Natal.
Erasmus.....	Pretoria.....	Transvaal.
Ermelo.....	Ermelo.....	Transvaal.
Escombe.....	Durban.....	Natal.
Eshowe.....	Eshowe.....	Natal (Zululand).
Eskdale.....	Bulawayo.....	S. Rhodesia.
Esperanza.....	Umzinto.....	Natal.
Essexvale.....	Umzingwane.....	S. Rhodesia.
Estcourt.....	Estcourt.....	Natal.
Eston.....	Camperdown.....	Natal.
Eteza.....	Lower Umfolosi.....	Natal (Zululand).
Evelyn Valley.....	Kingwilliamstown.....	Cape E.
Fzulweni.....	Mbabane.....	Swaziland.
Fairview Gold Mine.....	Barberton.....	Transvaal.
Fairy Glen.....	Pretoria.....	Transvaal.
False Bay.....	Between Simonstown and Caledon.	Cape W.
False Bay.....	Hlabisa.....	Natal (Zululand).
Farmer Peck's Valley.....	Simonstown.....	Cape W.

<i>Locality.</i>	<i>District.</i>	<i>Province or Territory.</i>
Fauresmith.....	Fauresmith.....	Orange Free State.
Fazendo de Ferrao.....	Huila.....	Angola.
Felixburg.....	Chilimanzi.....	S. Rhodesia.
Felixton.....	Lower Omfolosi.....	Natal (Zululand).
Fern Kloof.....	Albany.....	Cape E.
Ferrao da Sola.....	Huila.....	Angola.
Fish Hoek.....	Simonstown.....	Cape W.
Fish River.....	Craddock.....	Cape M.
Flaaukraal.....	Wodehouse.....	Cape E.
Flo Forest.....	Kingwilliamstown.....	Cape E.
Floradora.....	Kuruman.....	Cape (Griqualand West).
Florida Lake.....	Krugersdorp.....	Transvaal.
Flynn's Bridge.....	Knysna.....	Cape M.
Forbes Reef.....	Mbabane.....	Swaziland.
Forest Hall.....	Knysna.....	Cape M.
Fort Beaufort.....	Fort Beaufort.....	Cape E.
Fort Cunynghame.....	Stutterheim.....	Cape E.
Fort Hare.....	Victoria East.....	Cape E.
Fort Jackson.....	East London.....	Cape E.
Fort Louis.....	Babanango.....	Natal (Zululand).
Fortuna Creek.....	Barberton.....	Transvaal.
Fort Victoria.....	Victoria.....	S. Rhodesia.
Fountains Valley.....	Pretoria.....	Transvaal.
Frames' Drift.....	Port Elizabeth.....	Cape M.
Franschhoek.....	Paarl.....	Cape W.
Franskraal.....	Smithfield.....	Orange Free State.
Frantzinas Rust.....	Barberton.....	Transvaal.
French Hoek, see Franschhoek.		
Friedenheim.....	Bloemfontein.....	Orange Free State.
Fullers Forest.....	Fort Beaufort.....	Cape E.
Gabieshoek.....	Lydenburg.....	Transvaal.
Gala Bush.....	Polela.....	Natal.
Gamtoos River Valley.....	Humansdorp.....	Cape M.
Gansekraal.....	George.....	Cape M.
Garcia's Pass.....	Riversdale.....	Cape M.
Garden of Eden.....	Knysna.....	Cape M.
Garies.....	Namaqualand.....	Cape W.
Garip.....	Namaqualand.....	Cape W.
Garstfontein.....	Pretoria.....	Transvaal.
Gatooma.....	Hartley.....	S. Rhodesia.
Gazaland is now.....	Melsetter.....	S. Rhodesia.
Gcuwa River.....	Kentani-Butterworth.....	Cape E.
Geduld.....	Springs.....	Transvaal.
Geduld Prop. Mines.....	Springs.....	Transvaal.
Geelhoutboomberg.....	George.....	Cape M.
'Gekau' (Drège)=Gcuwa River?		
Geldenhuis Deep G. M.....	Johannesburg.....	Transvaal.
Genadendal.....	Caledon.....	Cape W.
George.....	George.....	Cape M.
Giants Castle.....	Estcourt.....	Natal.
Gillitts.....	Pinetown.....	Natal.
Ginginhlovu.....	Mtunzini.....	Natal (Zululand).
Ginginhlovu.....	Mtunzini.....	Natal (Zululand).
Glebe Forest.....	Knysna.....	Cape M.
Glen.....	Bloemfontein.....	Orange Free State.
Glen Avon.....	Somerset East.....	Cape M.
Glen Burnie.....	Ixopo.....	Natal.
Glen Echo.....	Durban.....	Natal.
Glencairn.....	Cathcart.....	Cape E.
Glendale.....	Mazoe.....	S. Rhodesia.
Glenfillan.....	Albany.....	Cape E.
'Glenfilling' see Glenfillan.		
Glenlivet.....	Victoria.....	S. Rhodesia.
Gloria.....	Middelburg.....	Transvaal.

<i>Locality.</i>	<i>District.</i>	<i>Province or Territory.</i>
Gnadenthall, see Genadendal.		
Goanekontas	Swakopmund	South-west Africa.
Godwan River	Nelspruit	Transvaal.
Golden Valley	Somerset East	Cape M.
Gondola	Beira (Chimoio)	Manica e Sofala, Moçambique.
Gonubie	East London	Cape E.
Goodoo Bush	Bergville	Natal.
Gordons Bay	Somerset West	Cape W.
Goromonzi	Salisbury	S. Rhodesia.
Goudkopje	Huila	Angola.
Goukamma River	Knysna	Cape M.
Gouna Forest	Knysna	Cape M.
Gouritz River	Mossel Bay-Riversdale	Cape M.
Gqaga	Engcobo	Cape E.
Graafwater	Clanwilliam	Cape W.
Graaff Reinet	Graaff Reinet	Cape M.
Grahamstown	Albany	Cape E.
Graskop	Pilgrims Rest	Transvaal.
Grasmere	Krugersdorp	Transvaal.
Great Brak River	George	Cape M.
Great Karasberg	Warmbad	South West Africa.
Great Kei River, lower reaches	Kentani-Komgha	Cape E.
Great Noodsberg	New Hanover	Natal.
Greefswald, Limpopo River	Zoutpansberg	Transvaal.
Green Point	Cape	Cape W.
Greenville Mission	Bizana	Cape E (Pondoland).
Greylingspos	Brits	Transvaal.
Grey's Pass	Clanwilliam	Cape W.
Greytown	Umvoti	Natal.
Groenkloof	Malmesbury	Cape W.
Groenkloof	Pretoria	Transvaal.
Groenkop	George	Cape M.
Groot Constantia	Wynberg	Cape W.
Groot Drakenstein	Paarl	Cape W.
Grootfontein nr. Harrismith	Harrismith	Orange Free State.
Grootfontein	Grootfontein	South West Africa.
Groot Karaberg—Great Karasberg.		
Grootrivier	Knysna	Cape M.
Groot Schuur	Wynberg	Cape W.
Grootvadersbosch	Swellendam	Cape W.
Groot Vischrivier or Groot Vis-rivier	Cradock—Somerset East—Albany— Peddie.	Cape M—E.
Grootvlei	Heidelberg	Transvaal.
Grootvlei Prop. G.M.	Springs	Transvaal.
Gumtree	Fisksburg	Orange Free State.
Guru	Grootfontein	South-west Africa.
Gwaai Settlement	Nyamandhlovu	S. Rhodesia.
Gwanda	Gwanda	S. Rhodesia.
Gwebi	Salisbury	S. Rhodesia.
Gwelo	Gwelo	S. Rhodesia.
Gxoqxowe Forest	Kingwilliamstown	Cape E.
Gxulu Forest	Kingwilliamstown	Cape E.
Haakdoornfontein	Pretoria	Transvaal.
Habungu River	Cubango	Angola.
Haenertsburg	Pietersburg	Transvaal.
Haifischbusht	Lüderitz	South West Africa.
Haifischinsel	Lüderitz	South West Africa.
Halfway House	Pretoria	Transvaal.
Hamanskraal	Pretoria	Transvaal.
Hamberg	Krugersdorp	Transvaal.
Hamburg	East London	Cape E.
Hamilton Reservoir	Albany	Cape E.
Hanglip, Louis Trichardt	Zoutpansberg	Transvaal.

<i>Locality.</i>	<i>District.</i>	<i>Province or Territory.</i>
Hankey	Humansdorp	Cape M.
Hanover	Hanover	Cape M.
Harald Forest, see Hovald.		
Harden Heights	Umvoti	Natal.
Hardong	Alfred	Natal.
Harkerville Forest	Knysna	Cape M.
Harrismith	Harrismith	Orange Free State.
Hartebeestfontein	Klerksdorp	Transvaal.
Hartebeestpoort	Brits	Transvaal.
Hartley	Hartley	S. Rhodesia.
Hashlosa Mt.	Estcourt	Natal.
Hatfield	Hartley	S. Rhodesia.
Hatfield, Pretoria	Pretoria	Transvaal.
Hatherley	Pretoria	Transvaal.
Hawston	Caledon	Cape W.
Headlands	Makoni	S. Rhodesia.
Hebron	Pretoria	Transvaal.
Heidelberg (Cape)	Riversdale	Cape M.
Heidelberg	Heidelberg	Transvaal.
Heibron	Heibron	Orange Free State.
Hekpoort	Krugersdorp	Transvaal.
Helderberg	Somerset West	Cape W.
Helpmekaar, Woodbush	Pietersburg	Transvaal.
Hendricksdal	Pilgrims Rest	Transvaal.
Henley on Klip	Vereeniging	Transvaal.
Henley	Pietermaritzburg	Natal.
Hennops River	Pretoria	Transvaal.
Hercules	Pretoria	Transvaal.
Hereroland		South West Africa.
Hermanus	Caledon	Cape W.
Herzogville	Boshof	Orange Free State.
Hex rivierberg	Ceres-Worcester	Cape W.
Highbury	Polela	Natal.
Highflats	Ixopo	Natal.
Hillarys	Durban	Natal.
Hill Crest, Pretoria	Pretoria	Transvaal.
Hillside	Bulawayo	S. Rhodesia.
Hilton Road	Pietermaritzburg	Natal.
Himeville	Underberg	Natal.
Hippo Pool, Pretorius Kop	Nelspruit	Transvaal.
Hlabini Forest	Polela	Natal.
Hlatikulu Forest	Estcourt	Natal.
Hlinza Forest	Eshowe	Natal (Zululand).
Hluhluwe	Hlabisa	Natal (Zuland).
Hoek van Hellbosch	Letaba	Transvaal.
Hofmans Kloof	Albany	Cape E.
Hogsback	Victoria East	Cape E.
Hoha Forest	Umzimkulu	Cape E (Griqualand East).
Holfontein	Lichtenberg	Transvaal.
Hollandsdrift	Pietersburg	Transvaal.
Home Rule	Underberg	Natal.
Hondjeskuil	Barkly West	Cape (Griqualand West)
Honeykloof	Uniondale	Cape M.
Hoofbos, see Main Forest		
Hoogekraalsrivier	? Knysna	Cape.
Hoogfontein	Ladybrand	Orange Free State.
Hopefield	Malmesbury	Cape W.
Hopevale	Polela	Natal.
Horns Nek	Pretoria	Transvaal.
Horo Bush	Barberton	Transvaal.
Horse Shoe Forest	Kingwilliamstown	Cape E.
Hoshlosa Mt., see Hashlosa.		
Hottentots Holland	Somerset West	Cape W.
Hout Bay	Wynberg	Cape W.
Houtboschdorp	Pietersburg	Transvaal.
Houtboschberg	Pietersburg	Transvaal.

<i>Locality.</i>	<i>District.</i>	<i>Province or Territory.</i>
Houwhoekberg	Caledon	Cape W.
Hovald Forest	Kingwilliamstown	Cape E.
Howick	Lions River	Natal.
Howiesons Poort	Albany	Cape E.
Huila or Huilla	Huila	Angola.
Huisriviersberg	Ladismith-Oudtshoorn	Cape M.
Humansdorp	Humansdorp	Cape M.
Humbe	Huila	Angola.
Humewood	Port Elizabeth	Cape M.
Hunters Road	Gwelo	S. Rhodesia.
Hunyani	Salisbury	S. Rhodesia.
Hysberge	Ladismith	Cape M.
Hysrivierberge see Huisriverisberge.		
Ifafa	Umzinto	Natal.
Ida's Valley	Stellenbosch	Cape W.
Idutywa	Idutywa	Cape E.
Ihluka	Alfred	Natal.
Illovo	Umlazi	Natal.
Illovo River	Pinetown	Natal.
Imbezana	Port Shepstone	Natal.
Imhoff's Gift	Simonstown	Cape W.
Imloega Valley	Umtali	S. Rhodesia.
Immerpan	Potgietersrust	Transvaal.
Impamputo	Lourenço Marques (Sabie)	Sul do Save, Moçambique.
Impendhle	Impendhle	Natal.
Imperani Plantation	Ficksburg	Orange Free State.
Impolweni	New Hanover	Natal.
Invani	Queenstown	Cape E.
Inaccessible Gorge, Table Mt.	Cape	Cape W.
Inanda	Inanda	Natal.
Inchanga	Camperdown	Natal.
Incomati	Lourenço Marques (Sabie)	Mocambique.
Indumeni Forest	Bergville	Natal.
Infulene	Lourenço Marques (Marracuene)	Sul do Save, Moçambique.
Infulxane	Entonjaneni	Natal (Zululand).
Ingangwane	Pietermaritzburg	Natal.
Ingeli Forest	Alfred	Natal.
Ingogo	Newcastle	Natal.
Ingwavuma	Ingwavuma	Natal (Zululand).
Inhaca Is.	Lourenço Marques	Sul do Save, Moçambique.
Inhambane	Inhambane (Inhambane)	Sul do Save, Moçambique.
Insekeni	Umzimkulu	Cape E (Griqualand East).
Insiza	Insiza	S. Rhodesia.
Insizwa	Mount Ayliff	Cape E (Griqualand East).
Intsimbini	Port St. Johns	Cape E (Pondoland).
Inyanga	Inyanga	S. Rhodesia.
Inyati	Bubi	S. Rhodesia.
Inyazura	Rusapi	S. Rhodesia.
Inyezana River	Mtunzini	Natal (Zululand).
Inzana	Letaba	Transvaal.
Irene	Pretoria	Transvaal.
Iron Mine Hill	Gwelo	S. Rhodesia.
Isidenge Plantation	Stutterheim	Cape E.
Isipingo	Durban	Natal.
Ivantala	Huila	Angola.
Ivy Range	Barberton	Transvaal.
Ixopo	Ixopo	Natal.
Izelini Forest	Kingwilliamstown	Cape E.
Izotsha	Port Shepstone	Natal.
Jakhalsfontein	Prince Albert	Cape M.
Jakhalsrivier	Gordonia	Cape (Griqualand West)
Jacksonstuin	Brits	Transvaal.

<i>Locality.</i>	<i>District.</i>	<i>Province or Territory.</i>
Jagersfontein Mine	Fauresmith	Orange Free State.
Jamestown	Wodehouse	Cape.
Jameson's Drift	Eshowe	Natal (Zululand).
Jan de Boers	Worcester	Cape W.
Jansenville	Jansenville	Cape M.
Jau	Mossamedes	Angola.
Jeffrey's Bay	Humansdorp	Cape M.
Jessievale	Ermelo	Transvaal.
Jihu	Melsetter	S. Rhodesia.
Johannesburg	Johannesburg	Transvaal.
Jongensklip	Caledon	Cape W.
Jonkershoek	Stellenbosch	Cape W.
Joubertina	Uniondale	Cape M.
Juanasberg	Victoria East	Cape E.
Jubilee Mine	Pilgrims Rest	Transvaal.
Jutland	Port Elizabeth	Cape M.
Kaaimansgat	George	Cape M.
Kaaimansgat Forest	Pietersburg	Transvaal.
Kaaimansrivier	George	Cape M.
Kaalfontein	Pretoria	Transvaal.
Kaalplaats	Pretoria	Transvaal.
Kaapmuiden	Barberton	Transvaal.
Kaapschehoop	Nelspruit	Transvaal.
Kabindere	Cubango	Angola.
Kabusi Plantation	Stutterheim	Cape E.
Kafferfontein	Fauresmith	Orange Free State.
Kagaberg, nr. Bedford	Bedford	Cape E.
Kakamas	Kenhardt	Cape W.
Kalk Bay	Simonstown	Cape W.
Kakele	Huila	Angola.
Kakhea	Kalahari	Bechuanaland Protectorate
Kalkfontein	Warmbad	South West Africa.
Kalolo	Cubango	Angola.
Kamberg	Estcourt	Natal.
Kameeldrift	Pretoria	Transbaal.
Kamieskroon	Namaqualand	Cape W.
Kampuluvu R.	Cubango	Angola.
Kandahar Is., Victoria Falls	Wankie	S. Rhodesia.
Kang	Kalahari	Bechuanaland Protectorate
Kanye	Bangwaketsi Reserve	Bechuanaland Protectorate
Karatara	Knysna	Cape M.
Karino	Nelspruit	Transvaal.
Karkloof	Lions River	Natal.
Karree Kloof	Lydenburg	Transvaal.
Kasane or Kasani	Ngamiland	Bechuanaland Protectorate
Kassinga	Huila	Angola.
Kasouga River	Bathurst	Cape E.
Kasteel Poort, Table Mt.	Cape	Cape W.
Katberg	Stockenstrom	Cape E.
Katberg Main Forest	Stockenstrom	Cape E.
Kat River	Stockenstrom-Fort Beaufort	Cape E.
Kat River Valley	Stockenstrom-Fort Beaufort	Cape E.
Kaymangas, see Kaaimansgat.		
Kazungulu	Batoka	N. Rhodesia.
Keiskama Hoek	Kingwilliamstown	Cape E.
Kenilworth	Wynberg	Cape W.
Kelso Junction	Umzinto	Natal.
Kenhardt	Kenhardt	Cape W.
Keniston	Albany	Cape E.
Kentani	Kentani	Cape E.
Kestell	Bethlehem	Orange Free State.
Kestell Road	Harrismith	Orange Free State.
Keurboom	Knysna	Cape M.
Keurboomsrivier	Knysna	Cape M.

<i>Locality.</i>	<i>District.</i>	<i>Province or Territory.</i>
Keurkloof Forest.....	George.....	Cape M.
Kew, Durban.....	Durban.....	Natal.
Key (Drège)=Great Kei River (lower reaches).		
Khami Ruins.....	Bulawayo.....	S. Rhodesia.
Khamiesburg.....	Namaqualand.....	Cape W.
Khamiskron, see Kamieskroon.		
Kidd's Beach.....	East London.....	Cape E.
Kilgobbin.....	Durban.....	Natal.
Kimberley.....	Kimberley.....	Cape (Griqualand West).
Kincardine.....	Maclear.....	Cape E.
Kingwilliamstown.....	Kingwilliamstown.....	Cape E.
Kinross.....	Bethal.....	Transvaal.
Kirkwood.....	Uitenhage.....	Cape M.
Kirstenbosch.....	Wynberg.....	Cape W.
Kitive or Kitue.....	Huila.....	Angola.
Klaarstroom.....	Prince Albert.....	Cape M.
Klapmuts.....	Paarl.....	Cape W.
Klapperkop.....	Pretoria.....	Transvaal.
Klaver.....	Van Ryhnsdorp.....	Cape W.
Klein Australie.....	Zoutpansberg.....	Transvaal.
Kleinbrakrivier.....	Mossel Bay.....	Cape M.
Klein Drakenstein.....	Paarl.....	Cape W.
Klein Karasberg.....	Keetmanshoop.....	South West Africa.
Kleinplaat.....	George.....	Cape M.
Klein Kruis Rivuer.....	Riversdale.....	Cape M.
Kleinrivier.....	Humansdorp.....	Cape M.
Klein Vischriver or Klein Visrivier.....	Somerset East.....	Cape M.
Klipdam.....	Barkly West.....	Cape (Griqualand West).
Klipplaat.....	Jansenville.....	Cape M.
Klip River.....	Klip River.....	Natal.
Kliptown.....	Johannesburg.....	Transvaal.
Kloof, Dordresht.....	Wodehouse.....	Cape E.
Kloof.....	Pinetown.....	Natal.
Kloof Neck.....	Cape.....	Cape.
Kluitze's Kraal.....	Tulbagh.....	Cape W.
Klyn Visch Rivier=Klein Vischrivier.		
Knapdaar.....	Albert.....	Cape E.
Knockbarragh.....	Barkly West.....	Cape (Griqualand West).
Knoetze.....	Knysna.....	Cape M.
Knorhoek, Sir Lowry Pass.....	Somerset West.....	Cape W.
Knysna.....	Knysna.....	Cape M.
Koedoespoort.....	Pretoria.....	Transvaal.
Koedoes River.....	Pitersburg.....	Transvaal.
Koega RiverC=oega R.		
Koelenhof.....	Stellenbosch.....	Cape W.
Koffiefontein.....	Fauresmith.....	Orange Free State.
Kögel Bay.....	Somerset West.....	Cape W.
Kohi.....	Huila.....	Angola.
Kokstad.....	Mount Currie.....	Cape E (Griqualand East).
Kologha Forest.....	Stutterheim.....	Cape E.
Komati Poort.....	Barberton.....	Transvaal.
Komati River.....	Carolina-Barberton.....	Transvaal.
Komgha.....	Komgha.....	Cape E.
Kommetjie.....	Simonstown.....	Cape W.
Koningskroon.....	Elliot.....	Cape E.
Kooa.....	Bangwaketse Reserve.....	Bechuanaland Protectorate
Koratra=? Karatara.		
Koster.....	Rustenburg.....	Transvaal.
Kosterfontein.....	Rustenburg.....	Transvaal.
Koster River.....	Rustenburg.....	Transvaal.
Kouderivier.....	Bredasdorp.....	Cape W.
Kowie.....	Bathurst.....	Cape E.
Kraaifontein.....	Bellville.....	Cape W.
Kraairivier.....	Lady Grey-Barkley East.....	Cape E.
Krabbefontein.....	Letaba.....	Transvaal.
Krakakama.....	Port Elizabeth.....	Cape M.

<i>Locality.</i>	<i>District.</i>	<i>Province or Territory.</i>
Krakeel.....	Uniondale.....	Cape M.
Kranskop.....	Kranskop.....	Natal.
Krantzkloof, now Kloof.....	Pinetown.....	Natal.
Krantzpoort.....	Ermelo.....	Transvaal.
Kritzinger's Dam.....	Dordrecht.....	Cape E.
Kromrivier.....	Rustenburg.....	Transvaal.
Kroondal.....	Rustenburg.....	Transvaal.
Kroonstad.....	Kroonstad.....	Orange Free State.
Krugersdorp.....	Krugersdorp.....	Transvaal.
Krugerspost.....	Lydenburg.....	Transvaal.
Kruisfontein.....	Knysna.....	Cape M.
Kruispad.....	Stellenbosch.....	Cape W.
Kruis Rivier.....	Riversdale.....	Cape M.
Kubusi.....	Stutterheim.....	Cape E.
Kuebe.....	Cubango.....	Angola.
Kueio.....	Cubango.....	Angola.
Kuilsrivier.....	Bellville.....	Cape W.
Kuito River.....	Cubango.....	Angola.
Kulei.....	Cubango.....	Angola.
Kunene R.....	Boundary between.....	Angola and South West Africa.
Kuruman.....	Kuruman.....	Cape W.
Kusisi River.....	Cubango.....	Angola.
Kutsi.....	Huila.....	Angola.
Kutue River.....	Cubango.....	Angola.
Kwambonambi.....	Lower Umfolosi.....	Natal.
Kwatsani.....	Kalahari.....	Bechuanaland Protectorate
Laaken Vlei.....	Ceres.....	Cape W.
Ladismith.....	Ladismith.....	Cape M.
Ladybrand.....	Ladybrand.....	Orange Free State.
Lady Grey.....	Lady Grey.....	Cape E.
Ladysmith.....	Klip River.....	Natal.
Laingsburg.....	Laingsburg.....	Cape M.
Lake Chrissie.....	Ermelo.....	Transvaal.
Lake Irantála.....	Huila.....	Angola.
Lakeside.....	Wynberg.....	Cape W.
Lamberts Bay.....	Clanwilliam.....	Cape W.
La Mercy.....	Inanda.....	Natal.
Langbaan.....	Malmesbury.....	Cape W.
Langeberg.....	Hay-Kuruman.....	Cape (Griqualand West).
Langeberg.....	Swellendam-Riversdale.....	Cape W-M.
Langewens.....	Malmesbury.....	Cape W.
Langholm Estates.....	Bathurst.....	Cape E.
Langlaagte Gold Mine.....	Johannesburg.....	Transvaal.
Lauterwater.....	Uniondale.....	Cape M.
Lawley.....	Krugersdorp.....	Transvaal.
Lazingua River.....	Cubango.....	Angola.
Lebomba Mts.....	Letaba.....	Transvaal.
Ledzee.....	Letaba.....	Transvaal.
Leeuwdoorns.....	Wolmaranstad.....	Transvaal.
Leeuwpoort.....	Carolina.....	Transvaal.
Lemana.....	Zoutpansberg.....	Transvaal.
Leribe.....	Leribe.....	Basutoland.
Leslie.....	Bethal.....	Transvaal.
Letaba.....	Letaba.....	Transvaal.
Letaba Drift.....	Letaba.....	Transvaal.
Lichtenburg.....	Lichtenburg.....	Transvaal.
Lidgetton.....	Lions River.....	Natal.
Likise or Licise.....	Cubango.....	Angola.
Linden.....	Johannesburg.....	Transvaal.
Linyanti.....	Ngamiland.....	Bechuanaland Protectorate
Lions Head.....	Cape.....	Cape W.
Lions Rump.....	Cape.....	Cape W.
Little Fish River = Klein Visrivier.....		

<i>Locality.</i>	<i>District.</i>	<i>Province or Territory.</i>
Livingstone Island.....	Wankie.....	S. Rhodesia.
Llandudno.....	Cape.....	Cape W.
Llewellyn.....	Mount Currie.....	Cape E (East Griqualand).
Lobatsi.....		Bechuanaland Protectorate
Lomagundi.....	Lomagundi.....	S. Rhodesia.
Lonely Mine.....	Bubi.....	S. Rhodesia.
Long River.....	Cubango.....	Angola.
Long Kloof.....	Uniondale.....	Cape M.
Long Ridge.....	Knysna.....	Cape M.
Lokenburg.....	Calvinia.....	Cape W.
Lopollo.....	Huila.....	Angola.
Loskop.....	Estcourt.....	Natal.
Loskop Irrigation Dam.....	Witbank.....	Transvaal.
Losperfontein.....	Brits.....	Transvaal.
Lothair.....	Ermelo.....	Transvaal.
Louis Trichardt.....	Zoutpansberg.....	Transvaal.
Louisvale.....	Kenhardt.....	Cape W.
Lourenço Marques.....	Lourenço Marques.....	Sul do Save, Moçambique.
Lourensford.....	Somerset West.....	Cape W.
Louws Creek.....	Barberton.....	Transvaal.
Lovedale.....	Victoria East.....	Cape E.
Lowdale.....	Salisbury.....	S. Rhodesia.
'Lowenberg' ? = Leeuwenberg.		
Low Forest.....	Knysna.....	Cape M.
Lüderitzbucht.....	Lüderitz.....	South West Africa.
Lundie's Hill.....	Impendhle.....	Natal.
Luneberg.....	Paulpietersburg.....	Natal.
Lupata.....	Beira (Barue).....	Manica e Sofala, Moçambique.
Lusaka.....	Manica.....	N. Rhodesia.
Lusikisiki.....	Lusikisiki.....	Cape E (Pondoland).
Lydenburg.....	Lydenburg.....	Transvaal.
Lydiate.....	Hartley.....	S. Rhodesia.
Lyndhurst.....	Johannesburg.....	Transvaal.
Lyndoch.....	Bedford.....	Cape E.
Lynedoch.....	Stellenbosch.....	Cape W.
Lyttleton Junction.....	Pretoria.....	Transvaal.
Macequece.....	Beira (Manica).....	Manica e Sofala, Moçambique.
Macheke.....	Marandellas.....	S. Rhodesia.
Macjana.....	Lourenço Marques (Manhica).....	Sul do Save, Moçambique.
Maclear.....	Maclear.....	Cape E.
Mac Mac Falls.....	Pilgrims Rest.....	Transvaal.
Mac Mac Plantation.....	Pilgrims Rest.....	Transvaal.
Madanda Forest.....	Melsetter.....	S. Rhodesia.
Maele or Mahele.....	Lourenço Marques (Magude).....	Sul do Save, Moçambique.
Mafeking.....	Mafeking.....	Cape (Griqualand West).
Magalaquin R. nr. junction with Limpopo R.....	Zoutpansberg.....	Transvaal.
Magliesberg.....	Krugersdorp.....	Transvaal.
Magalies River.....	Pretoria.....	Transvaal.
Magoebas Kloof.....	Letaba.....	Transvaal.
Magude.....	Lourenço Marques (Magude).....	Sul do Save, Moçambique.
Magut.....	Ngotshe.....	Natal (Zululand).
Mahlabatini.....	Nongoma.....	Natal (Zululand).
Mahotas.....	Lourenço Marques (Marracuene).....	Sul do Save, Moçambique.
Maid of the Mist Mine.....	Barberton.....	Transvaal.
Main Forest.....	Knysna.....	Cape M.
Maiombo River.....	Mossamedes.....	Angola.
Maitland.....	Wynberg.....	Cape W.
Makapan Caves.....	Pretoria.....	Transvaal.
Makoni.....	Inyanga.....	S. Rhodesia.
Makwapala.....	Southern Province.....	Nyaslaand.
Malagazi.....	Pinetown.....	Natal.
Malkerns.....	Mbabane.....	Swaziland

<i>Locality.</i>	<i>District.</i>	<i>Province or Territory.</i>
Malcomess.....	Albert.....	Cape E.
Malelane.....	Barberton.....	Transvaal.
Malmesbury.....	Malmesbury.....	Cape W.
Malvern.....	Durban.....	Natal.
Mamagalieskraal.....	Brits.....	Transvaal.
Mangwendi.....	Marandellas.....	S. Rhodesia.
Manhica.....	Lourenço Marques (Manhiça)....	Sul do Save, Moçambique.
Manonge.....	Cubango.....	Angola.
Maotas, see Mahotas.		
Manubie Forest.....	Butterworth.....	Cape E.
Maputa.....	Ingwavuma.....	Natal.
Maputo River.....	Lourenço Marques (Maputo)....	Sul do Save, Moçambique.
Maquassi Ranch.....	Wolmaranstad.....	Transvaal.
Mara.....	Zoutpansberg.....	Transvaal.
Marabastad.....	Pretoria.....	Transvaal.
Maraisberg.....	Johannesburg.....	Transvaal.
Maramba.....	Cubango.....	Angola.
Marandellas.....	Marandellas.....	S. Rhodesia.
Marchand.....	Kenhardt.....	Cape W.
Margate.....	Port Shepstone.....	Natal.
Mariannahill.....	Pinetown.....	Natal.
Marianthall.....	Ixopo.....	Natal.
Marialtal.....	Gibeon.....	South West Africa.
Mariepskop.....	Pilgrims Rest.....	Transvaal.
Marikana.....	Rustenburg.....	Transvaal.
Maritzburg, see Pietermaritzburg.		
Marracuene.....	Lourenço Marques (Marracuene).	Sul do Save, Moçambique.
Marral.....	Quelimane (Zambeze).....	Zambezia, Moçambique.
Marromen.....	Quelimane (Marromen).....	Zambezia, Moçambique.
Marwaqa Forest.....	Polela.....	Natal.
Maryland.....	Lomagundi.....	S. Rhodesia.
Maseru.....	Maseru.....	Basutoland.
Mashangani.....	Arcturus.....	S. Rhodesia.
Masite.....	Maseru.....	Basutoland.
Massenberg.....	Malmesbury.....	Cape W.
Massinga.....	Inhambane (Massinga).....	Sul do Save, Moçambique.
Mastenberg, see Massenberg.		
Mataffin.....	Nelspruit.....	Transvaal.
Matatiele.....	Matatiele.....	Cape E.
Matjesfontein.....	Laingsburg.....	Cape M.
Matolo.....	Lourenço Marques (Marracuene).	Sul do Save, Moçambique.
Matopo Hills or Matopos.....	Matopo.....	S. Rhodesia.
Matucua or Matukua.....	Huila.....	Angola.
Mauritzfontein.....	Kimberley.....	Cape (Griqualand West).
Maxixe.....	Inhambane (Inhambane).....	Sul do Save, Moçambique.
Mayfern.....	Nelspruit.....	Transvaal.
Mayville.....	Durban.....	Natal.
Mazelspoort.....	Bloemfontein.....	Orange Free State.
Mazoe.....	Mazoe.....	S. Rhodesia.
Mbabane.....	Mbabane.....	Swaziland.
M'besa, see Mebesa.		
Mebesa Forest.....	Umtali.....	S. Rhodesia.
Meintjes Kop.....	Pretoria.....	Transvaal.
Melkbosch Strand.....	Bellville.....	Cape W.
Melk Rivier (Karoo).....	Graaff Reinet.....	Cape M.
Melmoth.....	Entonjaneni.....	Natal (Zululand)
Melsetter.....	Melsetter.....	S. Rhodesia.
Memba.....	Nampula (Memba).....	Niassa, Moçambique.
Merensky.....	Pietersburg.....	Transvaal.
Merrivale.....	Lions River.....	Natal.
Meruru or Miruru.....	Tete.....	Manica e Sofala, Moçambique.
Metonia.....	Nampula (Metonia).....	Niassa, Moçambique.
Meyerton.....	Vereeniging.....	Transvaal.
Mhalume, ? = Maulama.		
Middelbult.....	Standerton.....	Transvaal.

<i>Locality.</i>	<i>District.</i>	<i>Province or Territory.</i>
Middelburg.....	Middelburg.....	Cape M.
Middelburg.....	Middelburg.....	Transvaal.
Middelkop.....	Pretoria.....	Transvaal.
Middelpos.....	Calvinia.....	Cape W.
Mid-Illovo.....	Camperdown.....	Natal.
Millwood Forest.....	Knysna.....	Cape M.
Misgund.....	Uniondale.....	Cape M.
Mnondo.....	Mrewa.....	S. Rhodesia.
Moamba.....	Lourenço Marques.....	Sul do Save, Moçambique.
Moçambique.....	Namp ula (Moçambique).....	Niassa, Moçambique.
Mocuba.....	Quelimane.....	Zambesia, Moçambique.
Modderbee.....	Benoni.....	Transvaal.
Modderfontein.....	Germiston.....	Transvaal.
Modderfontein.....	Kimberley.....	Cape (Griqualand West).
Modderfontein Deep Levels G.M.....	Benoni.....	Transvaal.
Modderrivier.....	Kimberley.....	Cape (Griqualand West).
Modderspruit.....	Zoutpansberg.....	Transvaal.
Moedig Siding.....	Carolina.....	Transvaal.
Mokeetsi.....	Letaba.....	Transvaal.
Molteno.....	Molteno.....	Cape E.
Mona.....	Rusapi.....	S. Rhodesia.
Monino River.....	Huila.....	Angola.
Montagu.....	Montagu.....	Cape W.
Montagu Pass.....	George.....	Cape M.
Mont aux Sources.....	Bergville.....	Natal.
Moodie's Estates.....	Barberton.....	Transvaal.
Mooibank.....	Potchefstroom.....	Transvaal.
Mooiplaats, Hatherley.....	Pretoria.....	Transvaal.
Mooi River.....	Estcourt.....	Natal.
Moorddrift.....	Potgietersrust.....	Transvaal.
Moorreesburg.....	Malmesbury.....	Cape W.
Morgenzon.....	Ermelo.....	Transvaal.
Morro de Lopollo.....	Huila.....	Angola.
Morrumbene.....	Inhambane (Morrumbene).....	Sul do Save, Moçambique.
Mosdene, Naboomspruit.....	Waterberg.....	Transvaal.
Mossamedes.....	Mossamedes.....	Angola.
Mossel Bay.....	Mossel Bay.....	Cape M.
Mossel Rivier.....	Caledon.....	Cape W.
Mountain Drive, Grahamstown.....	Albany.....	Cape E.
Mountain Rise.....	Pietermaritzburg.....	Natal.
Mountain View, Hercules.....	Pretoria.....	Transvaal.
Mount Edgecombe.....	Inanda.....	Natal.
Mount Frere.....	Mount Frere.....	Cape E.
Mount Hopley, Upper Zwartkei.....	Queenstown.....	Cape E.
Mt. Kanduliri, Zambesi Region.....	? Tete.....	Moçambique.
Mt. Mamotsuiri.....	Letaba.....	Transvaal.
Mt. Murambala.....	Quelimane (Massingere).....	Zambesia, Moçambique.
Mt. Nhasinde ? = Mt. Nhansito.....		
Mt. Nhansito.....	Tete.....	Manica e Sofala, Moçambique.
Mt. Nuza.....	Umtali.....	S. Rhodesia.
Mount Pleasant.....	Salisbury.....	S. Rhodesia.
Mt. Silinda.....	Melsetter.....	S. Rhodesia.
Mowbray.....	Wynberg.....	Cape W.
Mposa.....	Lower Umfolosi.....	Natal (Zululand).
Mqanduli.....	Mqanduli.....	Cape E.
Mqatsheni.....	Polela.....	Natal.
M'Sasa.....	Salisbury.....	S. Rhodesia.
M'sikaba River.....	Lusikisiki.....	Cape E.
M'Soneddi.....	Mazoe.....	S. Rhodesia.
Mtambanana.....	Lower Umfolosi.....	Natal (Zululand).
Mtao.....	Umvuma.....	S. Rhodesia.
Mtepetepa.....	Mazoe.....	S. Rhodesia.
Mtunzini.....	Mtunzini.....	Natal (Zululand).
Mualama.....	Quelimane (Pebana).....	Zambesia, Moçambique.
Mucklenberg, Zebediela.....	Potgietersrust.....	Transvaal.

<i>Locality.</i>	<i>District.</i>	<i>Province or Territory.</i>
Muckeneuk, Pretoria.....	Pretoria.....	Transvaal.
Muden.....	Weenen.....	Transvaal.
Mufulira.....	(Copper Area).....	N. Rhodesia.
Muguene.....	Lourenço Marques (Maputo).....	Sul do Save, Moçambique.
Muizenberg.....	Simonstown.....	Cape W.
Mulders Drift.....	Krugerdsorp.....	Transvaal.
Mulders Vlei.....	Stellenbosch.....	Cape.
Mungari.....	Tete.....	Manhica e Sofala, Moçambique.
Murraysburg.....	Murraysburg.....	Cape M.
Muwe.....	Namaqualand.....	Cape W.
Naboomfontein.....	Potgietersrust.....	Transvaal.
Naboomspruit.....	Waterberg.....	Transvaal.
Nachtwacht.....	Bredasdorp.....	Cape W.
Nahoon.....	East London.....	Cape E.
'Naaiboornfontain' (Schlechter), see Naboomfontein.		
Namaacha.....	Lourenço Marques.....	Sul do Save, Moçambique.
Namaroup, Khamiesburg.....	Namaqualand.....	Cape W.
Nampula.....	Nampula.....	Niassa, Moçambique.
Napalanka.....	Cubango.....	Angola.
Narubis.....	Keetmashoop.....	South West Africa.
Nattevlei.....	Paarl.....	Cape W.
Natvoet.....	Namaqualand.....	Cape W.
Nautilus Point (Angra Pequena).....	Lüderitz.....	South West Africa.
Ncaga Mt., Luneberg.....	Paulpietersburg.....	Natal.
Ndwedwe.....	Inanda.....	Natal.
Neethlings Hof.....	Stellenbosch.....	Cape W.
Nelspruit.....	Nelspruit.....	Transvaal.
Nels River.....	Nelspruit.....	Transvaal.
Nelsrust.....	Pietermaritzburg.....	Natal.
New Agatha.....	Letaba.....	Transvaal.
New Amianthus Asbestos Mine.....	Nelspruit.....	Transvaal.
Newcastle.....	Newcastle.....	Natal.
New England.....	Barkly East.....	Cape E.
New Germany.....	Pinetown.....	Natal.
New Guelderland.....	Lower Tugela.....	Natal.
New Hanover.....	New Hanover.....	Natal.
Newlands.....	Wynberg.....	Cape W.
New Modderfontein G.M.....	Benoni.....	Transvaal.
New Modder Mine, see Modderfontein.		
New State Areas G.M.....	Springs.....	Transvaal.
Ngokong.....	Kalahari.....	Bechuanaland Protectorate
Ngome Forest.....	Ngotshe.....	Natal (Zululand).
Ngoya Forest.....	Mtunzini.....	Natal (Zululand).
Nhula.....	Quelimane.....	Zambezia, Moçambique.
Nietvoorby.....	Stellenbosch.....	Cape W.
Nieuwveld Mts.....	Fraserburg-Beaufort West.....	Cape M.
Nkandhla Forest.....	Nkandhla.....	Natal (Zululand).
Nkwalini.....	Eshowe.....	Natal (Zululand).
N'karini.....	Weenen.....	Natal.
Noetze.....	Knysna.....	Cape M.
Nongoma.....	Nongoma.....	Natal (Zululand).
Noodsberg.....	New Hanover.....	Natal.
Noordhoek.....	Simonstown.....	Cape W.
Northdene.....	Durban.....	Natal.
Northern Flats.....	Potgietersrust.....	Transvaal.
Northern Ravine, Rooiwal.....	Nelspruit.....	Transvaal.
Northlands.....	Johannesburg.....	Transvaal.
Norton.....	Hartley.....	S. Rhodesia.
Norwood.....	Johannesburg.....	Transvaal.
Notensele Forest, see Notinsila.		
Notinsila Forest.....	Ngqueleni.....	Cape E.
Notocote.....	Quelimane.....	Zambezia, Moçambique.
Nottingham Road.....	Estcourt.....	Natal.

<i>Locality.</i>	<i>District.</i>	<i>Province or Territory.</i>
Nourse Gold Mine.....	Johannesburg.....	Transvaal.
Nqadu Forest.....	Tsolo.....	Cape E.
Nqadu Heights.....	Tsolo.....	Cape E.
Nqutu.....	Nqutu.....	Natal (Zululand).
Ntambanana.....	Lower Umfolosi.....	Natal (Zululand).
Ntywenka.....	Tsolo.....	Cape E.
Nutfield.....	Waterberg.....	Transvaal.
Nuwe Rus.....	Namaqualand.....	Cape W.
Nyamandhlovu.....	Bulawayo.....	S. Rhodesia.
Obib.....	Lüderitz.....	South West Africa.
Odzani River.....	Umtali.....	S. Rhodesia.
Odzi.....	Makoni.....	S. Rhodesia.
Ocalaco.....	Letaba.....	Transvaal.
Okahandja.....	Okahandja.....	South West Africa.
Okaharui.....	Okahandja.....	South West Africa.
Okapuka.....	Windhoek.....	South West Africa.
Old Lead Mine, Rhenosterhoek.....	Middelburg.....	Transvaal.
Olifantsfontein.....	Pretoria.....	Transvaal.
Olifantshoek, nr. Alexandria.....	Alexandria.....	Cape E.
Olifants Hoek.....	Kuruman.....	Cape (Griqualand West).
Olifants Hoek.....	Uitenhage.....	Cape E.
Olifantsrivier (Schlechter).....	Van Rhynsdorp-Clanwilliam.....	Cape W.
Olifantsrivier.....	Witbank.....	Transvaal.
Olifantsrivier Camp.....	Pilgrims Rest.....	Transvaal.
Oliviers Hoek.....	Bergville.....	Natal.
Olukonda.....	Ovamboland Reserve.....	South West Africa.
Olyfhoutkloof nr. Enon.....	Uitenhage.....	Cape M.
Omaruru.....	Omaruru.....	South West Africa.
Ombale.....	Ovamboland Reserve.....	Sotuh West Africa.
'Omblas' (Drège), see Umlaas River, lower reaches.		
'Omsameulo' (Drège), see Umzimkulu River, lower reaches.		
'Omsamwubo' (Drège), see Umzimvubu River, lower reaches.		
'Omtata' (Drège), see Umtata River, lower reaches.		
'Omtendo' (Drège), see Umtentu River, lower reaches.		
Onderstepoort.....	Pretoria.....	Transvaal.
Ondongwa.....	Ovamboland Reserve.....	South West Africa.
Onolonga.....	Ovamboland Reserve.....	South West Africa.
Onrust.....	Caledon.....	Cape W.
Oogies.....	Witbank.....	Transvaal.
Oorlogsfontein.....	Potgietersrust.....	Transvaal.
Oppaslaagte.....	Lichtenberg.....	Transvaal.
Orange River (Station).....	Hopetown.....	Cape M.
Oranjeville.....	Heilbron.....	Orange Free State.
Oranjezicht.....	Cape.....	Cape W.
Orchard Siding.....	Worcester.....	Cape W.
Oribi Flats.....	Port Shepatone.....	Natal.
Oribi Gorge.....	Port Shepstone.....	Natal.
Otavi.....	Grootfontein.....	South West Africa.
Otjihavera.....	Windhoek.....	South West Africa.
Otjikuara ? = Otjihavera		
Otto's Bluff.....	Pietermaritzburg.....	Natal.
Oudehouts Kloof.....	Volksrust.....	Transvaal.
Oudtshoorn.....	Oudtshoorn.....	Cape M.
Outeniqua Mts.....	George.....	Cape M.
Outjo.....	Outjo.....	South West Africa.
Paardeplaats.....	Lydenburg.....	Transvaal.
Paarl.....	Paarl.....	Cape W.
Paarlberg.....	Paarl.....	Cape W.
Paddock.....	Port Shepstone.....	Natal.
Palmaryville.....	Zoutpansberg.....	Transvaal.
Palm Kloof (Victoria Falls).....	Wankie.....	S. Rhodesia.
Pan.....	Middelburg.....	Transvaal.

<i>Locality.</i>	<i>District.</i>	<i>Province or Territory.</i>
Pao.....	Mossamedes.....	Angola.
Paepaaisberg.....	Stellenbosch.....	Cape W.
Park Rynie.....	Umzinto.....	Natal.
Pas River.....	Mossamedes.....	Angola.
Patentie.....	Humansdorp.....	Cape M.
Paulsberg.....	Simonstown.....	Cape W.
Pelindaba.....	Pretoria.....	Transvaal.
Penhalonga.....	Umtali.....	S. Rhodesia.
Pepworth.....	Klip River.....	Natal.
Parktown.....	Johannesburg.....	Transvaal.
Parys.....	Vredefort.....	Orange Free State.
Perde Eiland.....	Kenhardt.....	Cape W.
Perseverance.....	Uitenhage.....	Cape M.
Petrus Brandt.....	Knysna.....	Cape M.
Philadelphia.....	Bellville.....	Cape W.
Phoenix.....	Inanda.....	Natal.
Pienaarsfontein.....	Barkly West.....	Cape (Griqualand West).
Pienaars Poort.....	Pretoria.....	Transvaal.
Pienaars River.....	Pretoria.....	Transvaal.
Piesanghoek.....	Zoutpansberg.....	Transvaal.
Pietermaritzburg.....	Pietermaritzburg.....	Natal.
Pietersburg.....	Pietersburg.....	Transvaal.
Piet Retief.....	Piet Retief.....	Transvaal.
Pilgrims Rest.....	Pilgrims Rest.....	Transvaal.
Pillansberg.....	Rustenburg.....	Transvaal.
Pinelands.....	Wynberg.....	Cape W.
Pinetown.....	Pinetown.....	Natal.
Piquetberg.....	Piquetberg.....	Cape W.
Pirie Forest.....	Kingwilliamstown.....	Cape E.
Planknek.....	Waterberg.....	Transvaal.
Plaston.....	Nelspruit.....	Transvaal.
Platbus.....	Riversdale.....	Cape M.
Platrand.....	Standerton.....	Transvaal.
Platrivier.....	Pretoria.....	Transvaal.
Plettenberg Bay.....	Knysna.....	Cape M.
Pniel.....	Paarl.....	Cape W.
Polana.....	Lourenço Marques.....	Sul do Save, Moçambique.
Politsi.....	Letaba.....	Transvaal.
Pomangula.....	Mossamedes.....	Angola.
Pongola.....	Piet Retief.....	Transvaal.
Ponta do Ouro.....	Lourenço Marques (Maputo).....	Sul do Save, Moçambique.
Pooles Bay, Hermanus.....	Caledon.....	Cape W.
Port Alfred.....	Bathurst.....	Cape E.
Port Durnford.....	Mtunzini.....	Natal (Zululand).
Port Elizabeth.....	Port Elizabeth.....	Cape M.
Porterville.....	Tulbagh.....	Cape W.
Portland.....	Knysna.....	Cape W.
Port Natal, see Durban.		
Porto Pinda.....	Mossamedes.....	Angola.
Port St. Johns.....	Port St. Johns.....	Cape E (Pondo land).
Port Shepstone.....	Port Shepstone.....	Natal.
Possession Is.....	Swakopmund.....	South West Africa.
Postmasberg.....	Hay.....	Cape (Griqualand West).
Potchefstroom.....	Potchefstroom.....	Transvaal.
Potgietersrust.....	Potgietersrust.....	Transvaal.
Powers Court.....	Umlazi.....	Natal.
Premier Mine.....	Pretoria.....	Transvaal.
Pretoria.....	Pretoria.....	Transvaal.
Pretoria North.....	Pretoria North.....	Transvaal.
Pretorius Kop.....	Nelspruit.....	Transvaal.
Princess Mine, Roodepoort.....	Krugersdorp.....	Transvaal.
Prieska.....	Prieska.....	Cape M.
Prinshof.....	Pretoria.....	Transvaal.
Prospect.....	Komgha.....	Cape E.
Pungwana Forest.....	Port St. Johns.....	Cape (Pondoland).
Puff Adder.....	Flagstaff.....	Cape E.

<i>Locality.</i>	<i>District.</i>	<i>Province or Territory.</i>
Putfontein.....	Benoni.....	Transvaal.
Pyramids.....	Pretoria.....	Transvaal.
Qolora.....	Kentani.....	Cape E.
Qudeni Forest.....	Nkandhla.....	Natal (Zululand).
Que Que.....	Gwelo.....	S. Rhodesia.
Queenstown.....	Queenstown.....	Cape E.
Quelimane.....	Quelimane.....	Zambezia, Moçambique.
Quiriri River.....	Cubango.....	Angola.
Qumbu.....	Qumbu.....	Cape E.
Radium.....	Waterberg.....	Transvaal.
Randfontein.....	Krugersdorp.....	Transvaal.
Rapenburg, Cape Flats.....	Wynberg.....	Cape W.
Randfontein Estates.....	Krugersdorp.....	Transvaal.
Ravenshill.....	Zoutpansberg.....	Transvaal.
Redan.....	Vereeniging.....	Transvaal.
Retreat.....	Wynberg.....	Cape W.
Reunion.....	Umlazi.....	Natal.
Rhebok Kop.....	Fouriesberg.....	Orange Free State.
Rhebok Kop.....	Fouriesberg.....	Orange Free State.
Rhenosterbos.....	Marico.....	Transvaal.
Rhenosterhoek (Old Lead Mine).....	Marico.....	Transvaal.
Rhenosterfontein.....	Marico.....	Transvaal.
Ribaue.....	Nampula (Ribaue).....	Niassa, Mocambique.
Ricatla.....	Lourenço Marques (Marracuene).....	Sul do Save, Moçambique.
Riehards Bay.....	Lower Umfolosi.....	Natal (Zululand).
Richmond.....	Richmond.....	Natal.
Riebeek West.....	Malmesbury.....	Cape W.
Rietfontein.....	Pretoria.....	Transvaal.
Rietvlei.....	Elliot.....	Cape E.
Rietvlei.....	Aliwal North.....	Cape E.
Rietvlei.....	Pretoria.....	Transvaal.
Rietvlei.....	Umvoti.....	Natal.
Rikatli, see Ricatla.		
Rio Giraul.....	Mossamedes.....	Angola.
Ripplemead, Dohne.....	Stutterheim.....	Cape E.
Riversdale.....	Riversdale.....	Cape M.
Riversdale.....	Mazoe.....	S. Rhodesia.
Riverton.....	Kimberley.....	Cape (Griqualand West).
Riverview Mine.....	Hlabisa.....	Natal (Zululand).
Riviersonderend.....	Caledon.....	Cape W.
Rivulets.....	Nelspruit.....	Transvaal.
Roberts Heights.....	Pretoria.....	Transvaal.
Robertson.....	Robertson.....	Cape W.
Robinson Deep G.M.....	Johannesburg.....	Transvaal.
Rockcliff, nr. Sidbury.....	Albany.....	Cape E.
Roggeveld.....	Sutherland.....	Cape W.
Rondebosch.....	Wynberg.....	Cape.
Rondeboschje.....	Potgietersrust.....	Transvaal.
Roodekop.....	Germiston.....	Transvaal.
Roodokuil Estate, Warmbaths.....	Waterberg.....	Transvaal.
Roodepoort.....	Krugersdorp.....	Transvaal.
Rooidam.....	Calvinia.....	Cape W.
Rooikoppies, Duivelskloof.....	Letaba.....	Transvaal.
Rooiwal.....	Nelspruit.....	Transvaal.
Rosebank.....	Wynberg.....	Cape W.
Rose Deep Mine.....	Germiston.....	Transvaal.
Rosehaugh.....	Barberton.....	Transvaal.
Rosendal.....	Ficksburg.....	Orange Free State.
Rosetta.....	Estcourt.....	Natal.
Rosettenville.....	Johannesburg.....	Transvaal.
Rosmead.....	Middelburg.....	Cape M.
Rössing.....	Swakopmund.....	South West Africa.

<i>Locality.</i>	<i>District.</i>	<i>Province or Territory.</i>
Rosslyn.....	Pretoria.....	Transvaal.
Rouxville.....	Rouxville.....	Orange Free State.
Rua River.....	Mazoe.....	S. Rhodesia.
Rubbervale.....	Letaba.....	Transvaal.
Rumbwa (?=Rumbavu).....	nr. Chobe Swamp.....	Bechuanaland Protectorate
Rusapi.....	Rusapi.....	S. Rhodesia.
Rust der Winter.....	Pretoria.....	Transvaal.
Rustenburg.....	Rustenburg.....	Transvaal.
Ruytersbosch.....	Mossel Bay.....	Cape M.
Saaihoek.....	Bethlehem.....	Orange Free State.
Sabie.....	Pilgrims Rest.....	Transvaal.
Saco.....	Mossamedes.....	Angola.
Saddleback.....	Barbeton.....	Transvaal.
Sakkemecho.....	Cubango.....	Angola.
St. James.....	Simonstown.....	Cape W.
St. Lucia Bay.....	Hlabisa.....	Natal (Zululand).
St. Lucia Lake.....	Hlabisa.....	Natal (Zululand).
Saldanha Bay.....	Malmesbury.....	Cape W.
Salisbury.....	Salisbury.....	S. Rhodesia.
Salisbury Is.....	Durban.....	Natal.
Saltpan, Loius Trichardt.....	Zoutpansberg.....	Transvaal.
Saltpan.....	Pretoria.....	Transvaal.
Samteesvlakte.....	Uitenhage.....	Cape M.
Sandbaken, nr Val.....	Standerton.....	Transvaal.
Sanddrift, nr. Brits.....	Brits.....	Transvaal.
Sandflats.....	Alexandria.....	Cape E.
Sandown.....	Johannesburg.....	Transvaal.
Sandown Bay.....	Caledon.....	Cape W.
Sand River.....	Pilgrims Rest.....	Transvaal.
Sannahspos.....	Bloemfontein.....	Orange Free State.
Sao Paulo de Messano.....	Lourenço Marques (Bilene).....	Sul do Save, Moçambique.
Sarnia.....	Pinetown.....	Natal.
Schagen.....	Nelspruit.....	Transvaal.
Schoemansrust.....	? Brits.....	Transvaal.
Schoenberg, north of Hluhluwe ?.....	? Nongoma.....	Natal, Zululand.
Schoonord, Sekukuniland.....	Lydenburg.....	Transvaal.
Schoonuitzicht.....	Zoutpansberg.....	Transvaal.
Schroeders.....	New Hanover.....	Natal.
Schurinks Kloof.....	Lydenburg.....	Transvaal.
Schwarzwald Forest.....	Victoria East.....	Cape E.
Scottburgh.....	Umzinto.....	Natal.
Sea Point.....	Cape.....	Cape W.
Sea View.....	Durban.....	Natal.
Sebalabala.....	Berea.....	Basutoland.
Sekukuni.....	Lydenburg.....	Transvaal.
Selati River.....	Letaba.....	Transvaal.
Selukwe.....	Selukwe.....	S. Rhodesia.
Sena.....	Beira (Sena).....	Manica e Sofala, Moçambique.
Sendelingsdrift or Sendlingsdrift.....	Lüderitz.....	South West Africa.
Serra de Cazimba.....	Mossamedes.....	Angola.
Serra de Lopollo.....	Huila.....	Angola.
Serra de Montes Negros.....	Mossamedes.....	Angola.
Serra da Xella.....	Huila.....	Angola.
Settlers.....	Waterberg.....	Transvaal.
Sevenfontein.....	Swellendam.....	Cape W.
Sevenfountains.....	Albany.....	Cape E.
Sevenoaks.....	Umvoti.....	Natal.
Seymour.....	Stockenstrom.....	Cape E.
Shamva.....	Mazoe.....	S. Rhodesia.
Shangani.....	Insiza.....	S. Rhodesia.
Shire Highlands.....	Southern Province.....	Nvasaland.
Sibasa.....	Zoutpansberg.....	Transvaal.
Sidbury.....	Albany.....	Cape E.
Signal Hill.....	Cape.....	Cape W.
Silikats Nek, see Zilikaats Nek.		

<i>Locality.</i>	<i>District.</i>	<i>Province or Territory.</i>
Silutshana.....	Nqutu.....	Natal (Zululand).
Silvermine Valley.....	Simonstown.....	Cape W.
Silverton.....	Pretoria.....	Transvaal.
Simmer and Jack Mines.....	Germiston.....	Transvaal.
Simondium.....	Paarl.....	Cape W.
Simons Berg.....	Stellenbosch.....	Cape.
Simonstown.....	Simonstown.....	Cape W.
Singisi.....	Mt. Currie.....	Cape E (Griqualand East).
Sinoia.....	Lomagundi.....	S. Rhodesia.
Sir Lowry Pass.....	Somerset West.....	Cape W.
Six Mile Spruit.....	Pretoria.....	Transvaal.
Scheerpoort.....	Brits.....	Transvaal.
Skidders Court.....	Pretoria.....	Transvaal.
Slanghoeks Mts.....	Worcester.....	Cape W.
Smithfield.....	Smithfield.....	Orange Free State.
Smitskraal.....	Boshoff.....	Orange Free State.
Smitwinkel.....	Simonstown.....	Cape W.
Sobi.....	Cubango.....	Angola.
Solheim Mission Station.....	Eshoew.....	Natal, (Zululand).
Somabula.....	Gwelo.....	S. Rhodesia.
Somerset East.....	Somerset East.....	Cape M.
Somerset Strand.....	Somerset West.....	Cape W.
Somerset West.....	Somerset West.....	Cape W.
Sonderwater.....	Pretoria.....	Transvaal.
South African Lands & Exploration Co. G.M.	Brakpan.....	Transvaal.
Spion Kop.....	Klip River.....	Natal.
Spitzkop, Cape.....	Barkly West.....	Cape (Griqualand West).
Spitzkop.....	Pilgrims Rest.....	Transvaal.
Spitzkop, nr. Table Mt.....	Pietermaritzburg.....	Natal.
Springbok.....	Namaqualand.....	Cape W.
Springbok Flats.....	Waterberg.....	Transvaal.
Springfield.....	Durban.....	Natal.
Springs Mines.....	Springs.....	Transvaal.
Stamford Hill.....	Durban.....	Natal.
Standerton.....	Standerton.....	Transvaal.
Stanger.....	Lower Tugela.....	Natal.
Stapleford (Forest Reserve).....	Inyanga.....	S. Rhodesia.
Steenberg.....	Wynberg.....	Cape W.
Steenbokfontein.....	Rustenburg.....	Transvaal.
Steenbras Rivier.....	Somerset West.....	Cape W.
Stegi.....	Ubombo.....	Swaziland.
Steinkopf.....	Namaqualand.....	Cape W. . .
Stella Bush.....	Durban.....	Natal.
Stellenbosch.....	Stellenbosch.....	Cape W.
Sterkfontein.....	Herschel.....	Cape E.
Sterkstroom.....	Sterkstroom.....	Cape E.
Sterkwater.....	Pretoria.....	Transvaal.
Steynsburg.....	Steynsburg.....	Cape E.
Steynsdorp.....	Carolina.....	Transvaal.
Stikland.....	Belville.....	Cape W.
Stilbaai, see Still Bay.		
Still Bay.....	Riversdale.....	Cape M.
Stinkwater.....	Pretoria.....	Transvaal.
Stones Hill.....	Albany.....	Cape E.
Storms River.....	Humansdorp.....	Cape M.
Storms Vlei.....	Swellendam.....	Cape W.
Strowan, Grahamstown.....	Albany.....	Cape E.
Strubens Valley, Roodepoort.....	Krugersdorp.....	Transvaal.
Stutterheim.....	Stutterheim.....	Cape E.
Sub-Nigel G.M.....	Heidelberg.....	Transvaal.
Sunday Falls, nr. Mont-aux-Sources.....	Bergville.....	Natal.
Sundays River.....	Uitenhage.....	Cape M.
Suurbraak.....	Swellendam.....	Cape W.
Suurberg, see Zuurberg.		
Sydenham.....	Port Elizabeth.....	Cape M.

<i>Locality.</i>	<i>District.</i>	<i>Province or Territory.</i>
Swakop.....	Swakopmund.....	South West Africa.
Swakopmund.....	Swakopmund.....	South West Africa.
Swallowfields.....	Salisbury.....	S. Rhodesia.
Swanepoelsrust.....	Waterberg.....	Transvaal.
Swartberg.....	Swellendam.....	Cape W.
Swartkop River.....	Omaruru-Okahandja.....	South West Africa.
Swartkoppies.....	Pretoria.....	Transvaal.
Sweetwaters.....	Pietermaritzburg.....	Natal.
Swellendam.....	Swellendam.....	Cape W.
Swinburne.....	Harrismith.....	Orange Free State.
Swing Bridge.....	Pretoria.....	Transvaal.
Syringa.....	Bubalina.....	S. Rhodesia.
Sycamore.....	Belfast.....	Transvaal.
Sydenham.....	Durban.....	Natal.
Taaiboschkranz, nr. Rhenoster River.....	Heilbron.....	Orange Free State.
Taaibos Spruit.....	Potchefstroom.....	Transvaal.
Tabamhlope.....	Estcourt.....	Natal.
Tabankulu.....	Tabankulu.....	Cape E. (Pondoland)
Table Mountain.....	Cape.....	Cape W.
Table Mt., Natal.....	Pietermaritzburg-Camperdown.....	Natal.
Tafelberg.....	Middelburg.....	Cape M.
Takoon.....	Bechuanaland Protectorate
Tamboers Kloof.....	Cape.....	Cape W.
Tandaai Pass.....	Melsetter.....	S. Rhodesia.
Tarkastad.....	Tarka.....	Cape E.
Tarlton.....	Krugersdorp.....	Transvaal.
Taungs.....	Taungs.....	Cape (Griqualand West).
Taylerville.....	Mount Currie.....	Cape E. (Griqualand East).
Tayside.....	Dundee.....	Natal.
Tenadu.....	Cape E (Tembuland).
Tebetabeng.....	Berea.....	Basutoland.
Tehututu.....	Kalahari.....	Bechuanaland Protectorate
Tendenko Forest.....	Cape E.
Teyateyaneng.....	Berea.....	Basutoland.
Thabazimbi.....	Rustenburg.....	Transvaal.
The Aloes, Kirstenbosch.....	Wynberg.....	Cape W.
The Downs.....	Letaba.....	Transvaal.
The Hanging Shaw.....	Rustenburg.....	Transvaal.
The Heads.....	Knysna.....	Cape M.
The Look Out, Bushmans River.....	Albany.....	Cape E.
The Thorns.....	Pretoria.....	Transvaal.
The Wilderness.....	George.....	Cape M.
The Willows.....	Pretoria.....	Transvaal.
Theydon.....	Marandellas.....	S. Rhodesia.
Thornville.....	Camperdown.....	Natal.
Tidbury's Toll.....	Stokenstroom.....	Cape E.
Toise River.....	Stutterheim.....	Cape E.
Tokai.....	Wynberg.....	Cape W.
Tonetti.....	Barberton.....	Transvaal.
Tontelboskolk.....	Calvinia.....	Cape W.
Toowoomba, Warmbaths.....	Waterberg.....	Transvaal.
Town Bush.....	Pietermaritzburg.....	Natal.
Town Bush Valley.....	Pietermaritzburg.....	Natal.
Tradouw Pass.....	Swellendam.....	Cape W.
Triappes Valley.....	Bathurst.....	Cape E.
Trelawney.....	Lomagundi.....	S. Rhodesia.
Triangle.....	? Montagu.....	Cape W.
Trigaartspoort.....	Pretoria.....	Transvaal.
Trompetterspoort.....	Willowmore.....	Cape M.
Tshakoma.....	Zoutpansberg.....	Transvaal.
Tshokwane, Kruger Nat. Park.....	Pilgrims Rest.....	Transvaal.
Tugela.....	Lower Tugela.....	Natal.
Tugela Valley, near Goodoo.....	Bergville.....	Natal.
Tugela Valley, near Mont aux Sources.....	Bergville.....	Natal.

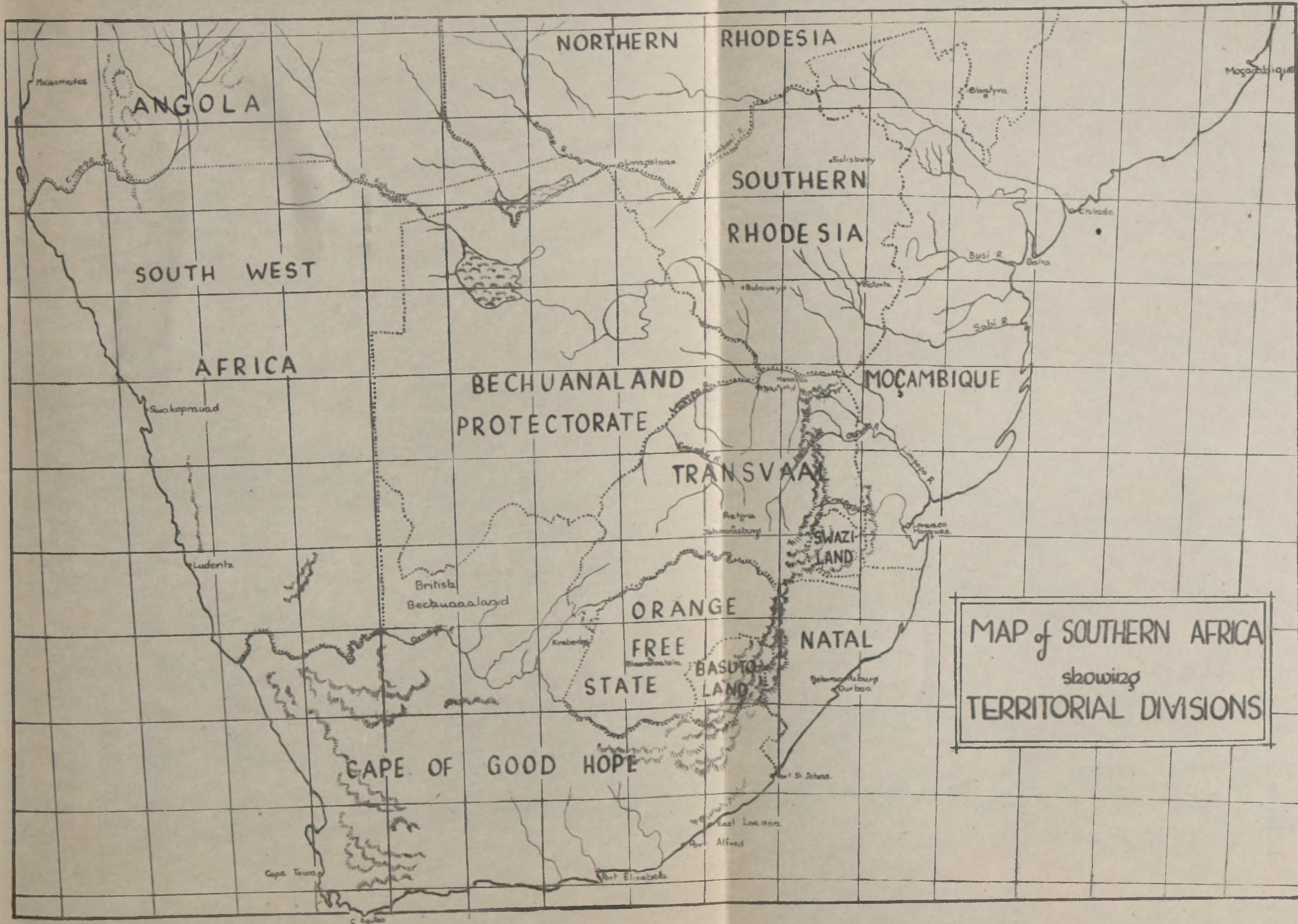
<i>Locality.</i>	<i>District.</i>	<i>Province or Territory.</i>
Tuinplaats.....	Waterberg.....	Transvaal.
Tuin van Eden, see Garden of Eden.		
Tulbagh.....	Tulbagh.....	Cape W.
Tumlini Hill, nr. Mt. Mlanje.....	Quelimane (Milange).....	Zambezia, Moçambique.
Turffontein.....	Johannesburg.....	Transvaal.
Tweedie.....	Lions River.....	Natal.
Twee Rivier.....	Uniondale.....	Cape M.
Tweespruit.....	Ladybrand.....	Orange Free State.
Tygerberg.....	Cape.....	Cape W.
Tyititi Forest, nr. Keiskamamhoek.....	Kingwilliamstown.....	Cape E.
Tzaneen.....	Letaba.....	Transvaal.
Ubombo.....	Ubombo.....	Natal (Zululand).
Ugie.....	Maclear.....	Cape E.
Uitenhage.....	Uitenhage.....	Cape E.
Uitkomst.....	Na, aqualand.....	Cape W.
Uitvlugt Plantations.....	Wynberg.....	Cape W.
Ukasini Estates.....	Weenen.....	Natal.
Ukualaukalti.....	? Ovamboland Reserve.....	South West Africa.
Umbelusi or Umbeluzi.....	Lourenço Marques (Marracuene).....	Sul do Save, Moçambique.
Umbilo.....	Durban.....	Natal.
Umbogintwini.....	Durban.....	Natal.
Umbovana.....	?.....	Natal (Zululand).
Umfolosi.....	Lower Umfolosi.....	Natal (Zululand).
Umgeni.....	Durban.....	Natal.
Umgeni Beach.....	Durban.....	Natal.
Umgeni Lagoon.....	Durban.....	Natal.
Umhlali.....	Lower Tugela.....	Natal.
Umhlanga River.....	Inanda.....	Natal.
Umhlanga Rocks.....	Inanda.....	Natal.
Umhlatuzi.....	Mtunzini.....	Natal (Zululand).
Umkomas.....	Umzinto.....	Natal.
Umlaa River, lower reaches.....	Umlazi-Durban.....	Natal.
Umpala.....	Lourenço Marques (Maputo).....	Sul do Save, Moçambique.
Umpumulo Hills.....	Fort Beaufort.....	Cape E.
Umsindusi River.....	Pietermaritzburg.....	Natal.
Umsineni R.....	Hlabisa.....	Natal (Zululand).
Umtali.....	Umtali.....	S. Rhodesia
Umtata.....	Umtata.....	Cape E. (Pondoland)
Umtata River, lower reaches.....	Mqanduli-Ngqeline.....	Cape E.
Umtentu River, lower reaches.....	Lusikisiki.....	Cape E (Pondoland).
Umtentweni.....	Port Shepstone.....	Natal.
Umtwalumi.....	Umzinto.....	Natal.
Umvukwe.....	Lomagundi.....	S. Rhodesia.
Umwindsi River.....	Salisbury.....	S. Rhodesia.
Umzimkulu.....	Umzimkulu.....	Cape E (Griqualand East).
Umzimkulu River, lower reaches.....	Port Shepstone.....	Natal.
Umzimvubu R., lower reaches.....	Port St. Johns-Lusikisiki.....	Cape E. (Pondoland).
Umzindeni R. see Umsineni R.		
Umzinto.....	Umzinto.....	Natal.
Umzinyati.....	Inanda.....	Natal.
Uniondale.....	Uniondale.....	Cape M.
Upington.....	Gordonia.....	Cape (Griqualand West).
Upper Bavians River.....	Bedford.....	Cape E.
Upper Tongaat.....	Lower Tugela.....	Natal.
Upper Zwartkei.....	Queenstown-Tarka.....	Cape E.
Utrecht.....	Utrecht.....	Natal.
Uwanetsi River.....	Lourenço Marques (Magudi).....	Sul do Save, Moçambique.
Vaalbank.....	Wakkerstroom.....	Transvaal.
Vaalkrants.....	Fauresmith.....	Orange Free State.
Vaal water.....	Waterberg.....	Tran vaal.
Val.....	Standerton.....	Tran vaal.
Valencia.....	Letaba.....	Tran vaal.

<i>Locality.</i>	<i>District.</i>	<i>Province or Territory.</i>
Van Reenen.....	Klip River.....	Natal.
Van Reenens Pass.....	Klip River.....	Natal.
Van Rhyn dorp.....	Van Rhyn dorp.....	Cape W.
Van Rhyns Pass.....	Van Rhynsdorp.....	Cape W.
Van Ryn Deep G.M.....	Benoni.....	Transvaal.
Van Schoors Drift.....	Malmesbury.....	Cape W.
Van Stadens Berg.....	Uitenhage.....	Cape E.
Van Stadens Pass.....	Uitenhage.....	Cape E.
Van Wyksfontein.....	Barkly West.....	Cape (Griqualand West).
Varkensvlei.....	? Wynberg.....	Cape W.
Ventersburg.....	Ventersburg.....	Orange Free State.
Ventersdorp.....	Ventersdorp.....	Transvaal.
Venterspost G.M.....	Krugersdorp.....	Transvaal.
Vereeniging.....	Vereeniging.....	Transvaal.
Verulam.....	Inanda.....	Natal.
Victoria Falls.....	Wankie.....	S. Rhodesia.
Vila Nova de Gaza.....	Lourenço Marques (Gaza).....	Sul do Save, Moçambique.
Viljoensdorp.....	Caledon.....	Cape W.
Viljoens Pass.....	Caledon.....	Cape W.
Villiersdorp.....	Robertson.....	Cape W.
Vischgat or Visgat.....	Waterberg.....	Transvaal.
Viissers Hoek.....	Pretoria.....	Transvaal.
Vlaeberg.....	Stellenbosch.....	Cape W.
Vlakdrift.....	Krugersdorp.....	Transvaal.
Vlakfontein.....	Wolmaranstad.....	Transvaal.
Vlottenberg.....	Stellenbosch.....	Cape W.
Vogelgat (Schlechter).....	? Caledon.....	Cape W.
Vogelsfontein G. M.....	Springs.....	Transvaal.
Volksrust.....	Volksrust.....	Transvaal.
Vosmansbeacon.....	Ermelo.....	Transvaal.
Vredefort.....	Vredefort.....	Orange Free State.
Vryburg.....	Vryburg.....	Cape (Griqualand West).
Vryheid.....	Vryheid.....	Natal.
Vumba Mts.....	Umtali.....	S. Rhodesia.
Waaikraal.....	Springs.....	Transvaal.
Wagenspadsnek, see Wapadsnek.		
Wakkerstroom.....	Wakkerstroom.....	Transvaal.
Walmer.....	Port Elizabeth.....	Cape M.
Wankie.....	Wankie.....	S. Rhodesia.
Wapadsnek.....	Pretoria.....	Transvaal.
Wargundy Orchards.....	Ladybrand.....	Orange Free State.
Warmbaths.....	Waterberg.....	Transvaal.
Warm Bokkeveld.....	Ceres.....	Cape W.
Warner Beach.....	Durban.....	Natal.
Wasserberg, nr. Windhoek.....	Windhoek.....	South West Africa.
Waterberg.....	Waterberg.....	Transvaal.
Waterberg.....	Windhoek.....	South West Africa.
Waterfall Estate nr. Sabi.....	Pilgrims Rest.....	Transvaal.
Waterfall.....	Knysna.....	Cape M.
Waterkloof.....	Pretoria.....	Transvaal.
Waterkloof.....	Rustenburg.....	Transvaal.
Waterval.....	Rustenburg.....	Transvaal.
Waterval Boven.....	Belfast.....	Transvaal.
Waterval Onder.....	Belfast.....	Transvaal.
Weenen.....	Weenen.....	Natal.
Welgelegen.....	Vryburg.....	Cape (Griqualand West).
Welgevonden.....	Brits.....	Transvaal.
Wellesley.....	Lomagundi.....	S. Rhodesia.
Wellington.....	Wellington.....	Cape W.
Welverdiend.....	Potchefstroom.....	Transvaal.
Welwitsch.....	Swakopmund.....	South West Africa.
Wemmershoek.....	Paarl.....	Cape W.
Wepener.....	Wepener.....	Orange Free State.
Wesselbron.....	Hoopstad.....	Orange Free State.

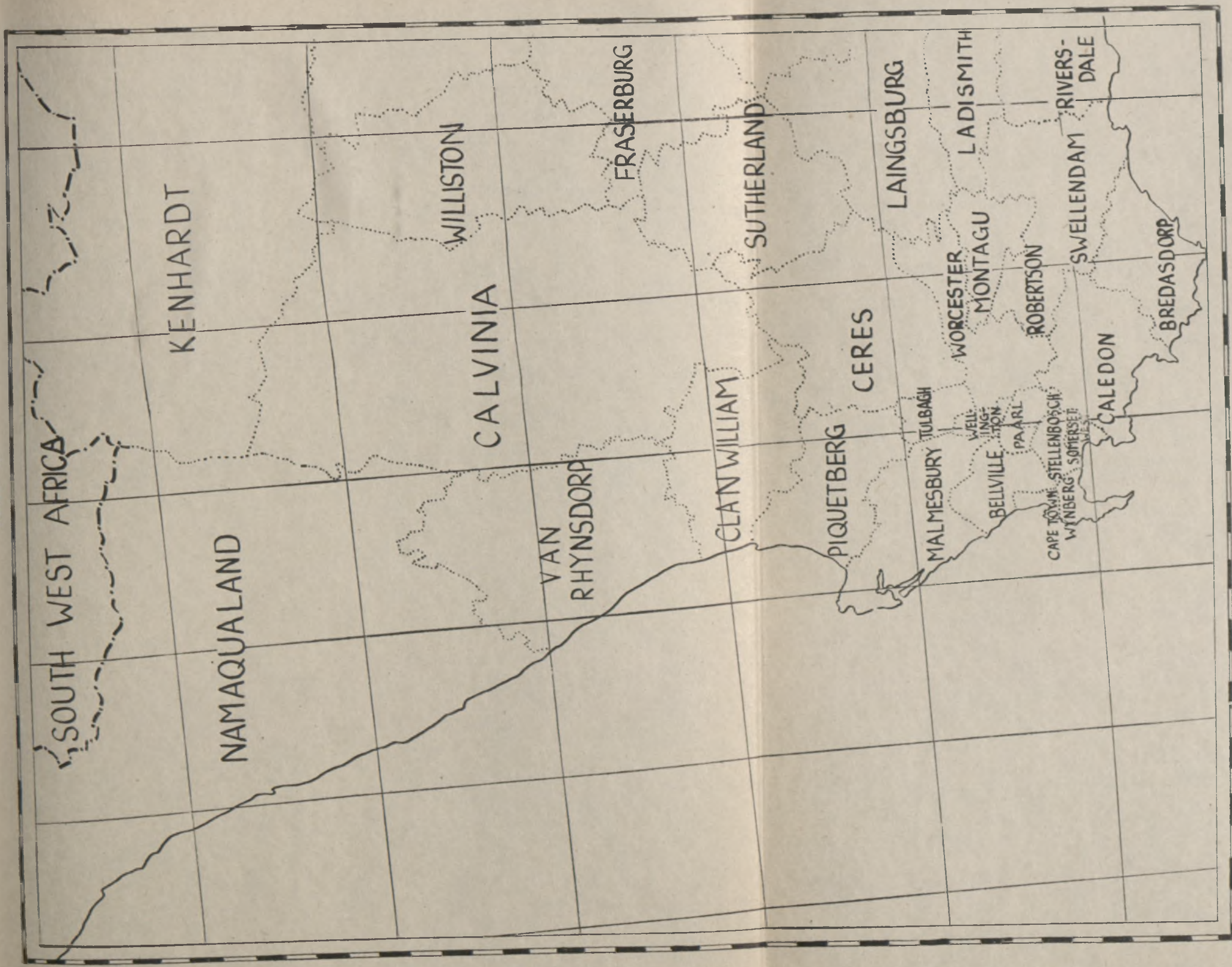
<i>Locality.</i>	<i>District.</i>	<i>Province or Territory.</i>
Wesselsnek.....	Klip River.....	Natal.
Wesselton Diamond Mine.....	Kimberley.....	Cape (Griqualand West).
Western Reefs G.M.....	Krugersdorp.....	Transvaal.
Westfalia.....	Letaba.....	Transvaal.
Westminster.....	Ladybrand.....	Orange Free State.
West Springs G.M.....	Springs.....	Transvaal.
West Wood, Haenertsburg.....	Pietersburg.....	Transvaal.
Wharnccliffe.....	East London.....	Cape E.
White River.....	Barberton.....	Transvaal.
White Heather Mine.....	Pietersburg.....	Transvaal.
Williston.....	Williston.....	Cape W.
Willowvale.....	Willowvale.....	Cape E.
Willowmore.....	Willowmore.....	Cape M.
Winburg.....	Winburg.....	Orange Free State.
Windhoek.....	Windhoek.....	South West Africa.
Windy Hill Estate.....	Pietermaritzburg.....	Natal.
Windsorton.....	Barkly West.....	Cape (Griqualand West).
Winkle Spruit.....	Durban.....	Natal.
Winterhoekberg.....	Uitenhage.....	Cape E.
Winterhoek Mts., see Winterhoekberg.		
Winters Kloof.....	Pietermaritzburg.....	Natal.
Witbank.....	Witbank.....	Transvaal.
Witberg or Wittebergen.....	Herschel.....	Cape E.
Witfontein.....	George.....	Cape M.
Witklip.....	Port Elizabeth.....	Cape M.
Witpoort.....	Middelburg.....	Transvaal.
Witpoortberg.....	Willowmore.....	Cape M.
Witpoortje.....	Krugersdorp.....	Transvaal.
Witsand or Witzand.....	Wynberg.....	Cape W.
Witte Rivier.....	Uitenhage.....	Cape E.
Wolfridge.....	Kingwilliamstown.....	Cape E.
Wolhutterskop.....	Rustenburg.....	Transvaal.
Wolseley.....	Tulbagh.....	Cape W.
Wolwekloof.....	Pretoria.....	Transvaal.
Wonderboom.....	Pretoria.....	Transvaal.
Wonderboom Poort.....	Pretoria.....	Transvaal.
Wonderfontein.....	Belfast.....	Transvaal.
Woodbourne.....	Knysna.....	Cape M.
Woodbury.....	Alexandria.....	Cape E.
Woodbush.....	Pietersburg.....	Transvaal.
Woodstock.....	Cape.....	Cape W.
Woodville Forest.....	George.....	Cape M.
Woolridge.....	Peddie.....	Cape E.
Worcester.....	Worcester.....	Cape W.
Worlds View, Van Reenens Pass.....	Klip River.....	Natal.
Wyebank.....	Pinetown.....	Natal.
Wynberg.....	Wynberg.....	Cape W.
Xalasi.....	Lourenço Marques (Maputo).....	Sul do Save, Moçambique.
Xinavane.....	Lourenço Marques (Magude).....	Sul do Save, Moçambique.
Xumeni Forest.....	Polela.....	Natal.
York.....	New Hanover.....	Natal.
Zandfontein.....	Pretoria.....	Transvaal.
Zandspruit.....	Wakkerstroom.....	Transvaal.
Zandvlakte.....	Willowmore.....	Cape M.
Zavala.....	Lourenço Marques (Zavala).....	Sul do Save, Moçambique.
Zebediela.....	Potgietersrust.....	Transvaal.
Zeerust.....	Marico.....	Transvaal.
Zenega.....	Salisbury.....	S. Rhodesia.
Zilikaats Nek.....	Brits.....	Transvaal.
Zilverfontein.....	Namaqualand.....	Cape W.

<i>Locality.</i>	<i>District.</i>	<i>Province or Territory.</i>
Zimbabwe.....	Victoria.....	S. Rhodesia.
Zimbiti or Mezimbiti Forest.....	Lourenço Marques.....	Sul do Save, Moçambique.
Zinca Forest.....	Mount Frere.....	Cape E.
Zomba.....	Southern Province.....	Nyasaland.
Zona River.....	Melsetter.....	S. Rhodesia.
Zumbo.....	Tete (Zumbo).....	Manica e Solfaa, Moçambique.
Zuurberg or Zuurebergen.....	Somerset East.....	Cape M.
Zuurbraak.....	Riversdale.....	Cape M.
Zuurvlakte.....	Aliwal North.....	Cape E.
Zwart Brug.....	George.....	Cape M.
Zwartdam nr. Saltpan.....	Pretoria.....	Transvaal.
Zwartfontein.....	Vryburg.....	Cape (Griqualand West).
Zwartklip.....	Wynberg.....	Cape W.
Zwartkop nr. Maritzburg.....	Pietermaritzburg.....	Natal.
Zwartkops River.....	Uitenhage-Port Elizabeth.....	Cape.
Zwartkops.....	Port Elizabeth.....	Cape M.
Zwartruggens.....	Rustenburg.....	Transvaal.

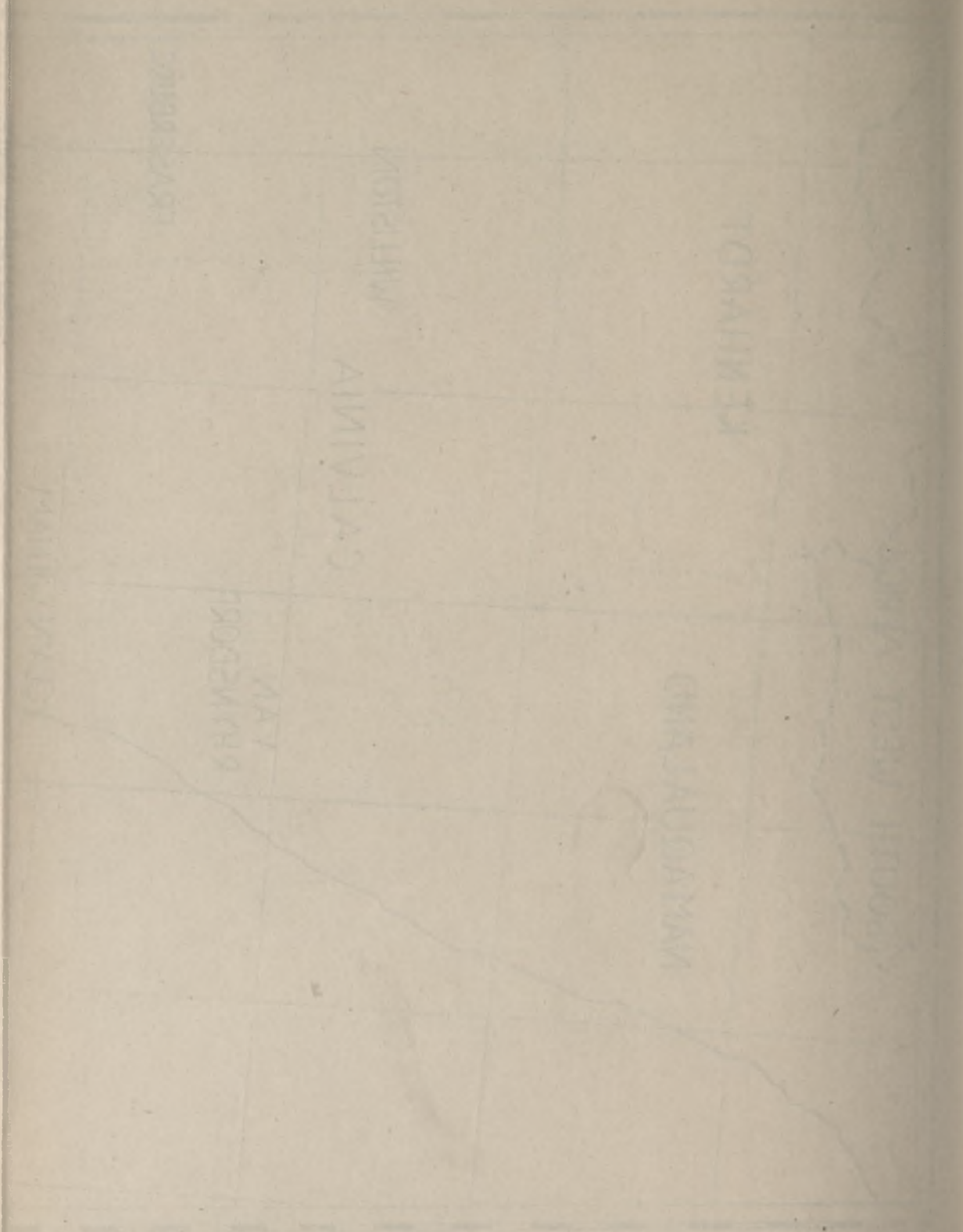
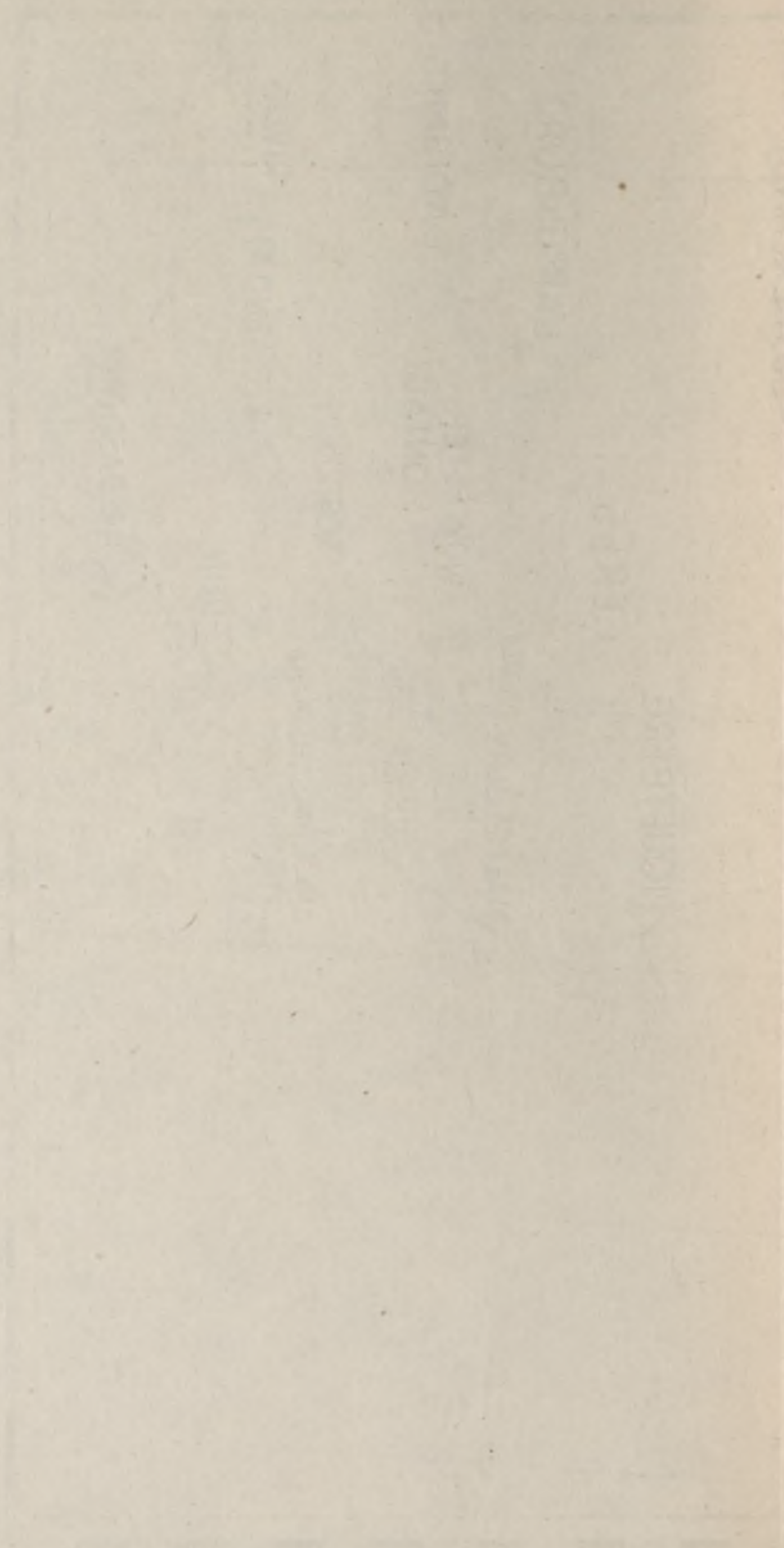
MAP I

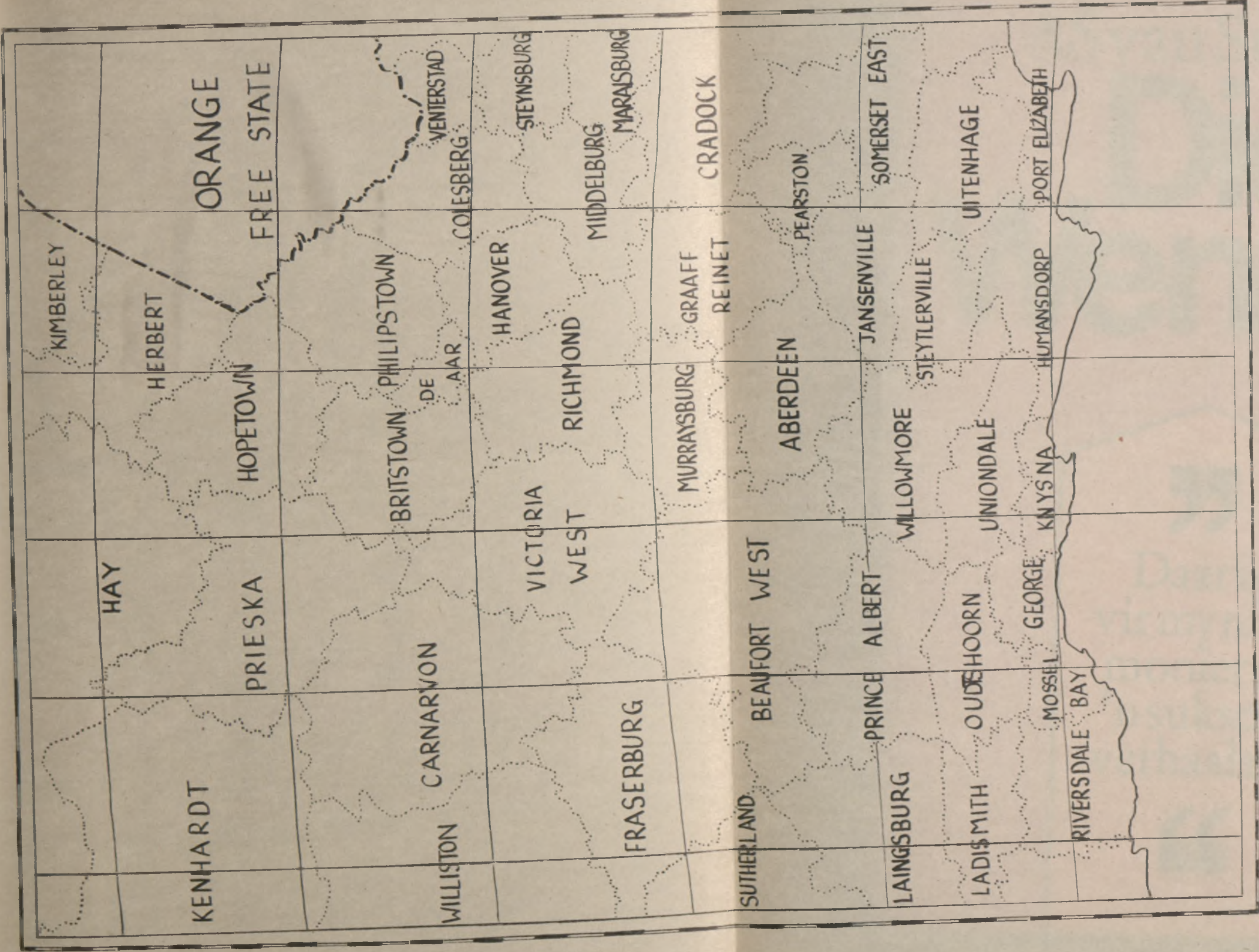


MAP of SOUTHERN AFRICA
 showing
 TERRITORIAL DIVISIONS

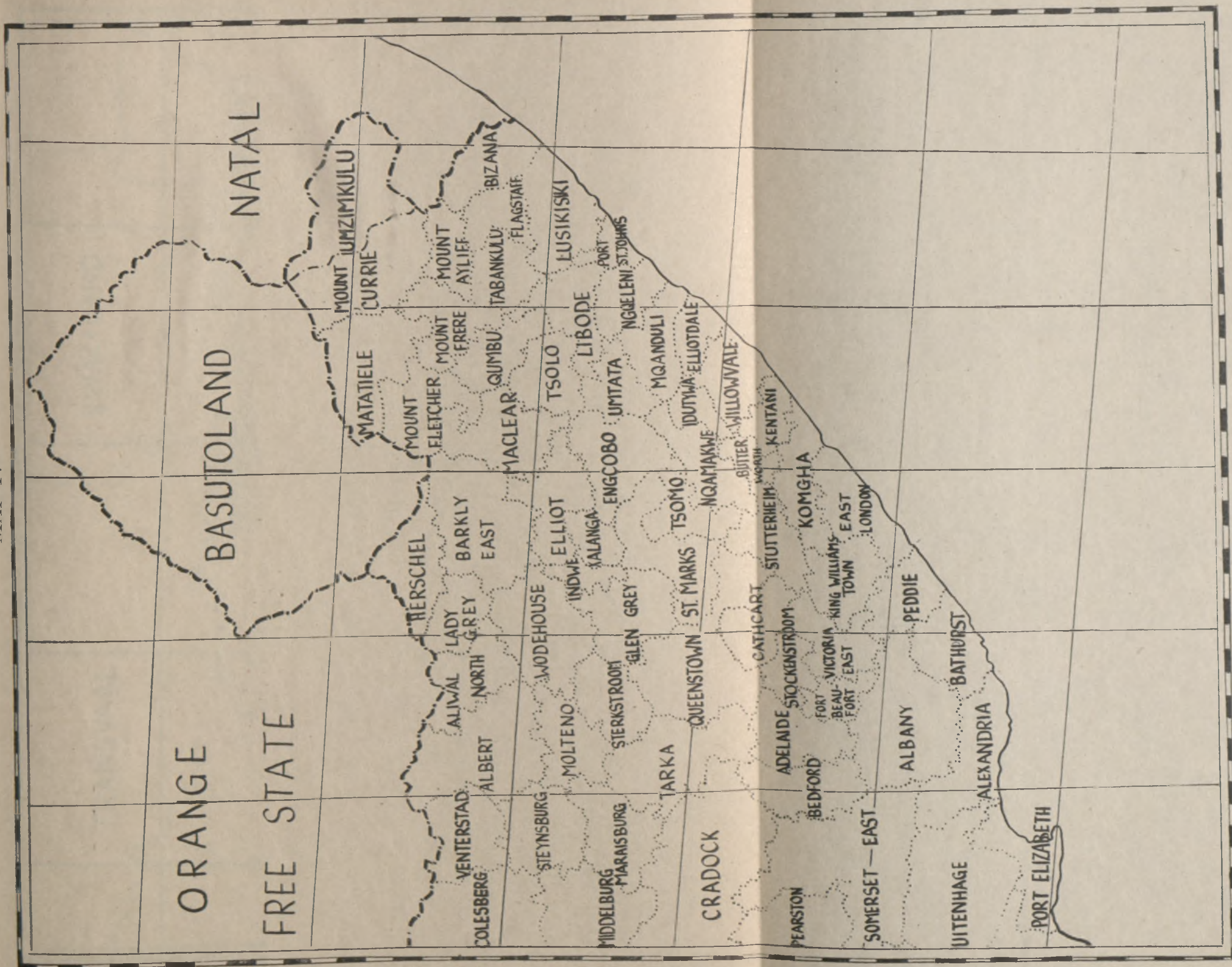


CAPE (WESTERN PROVINCE)

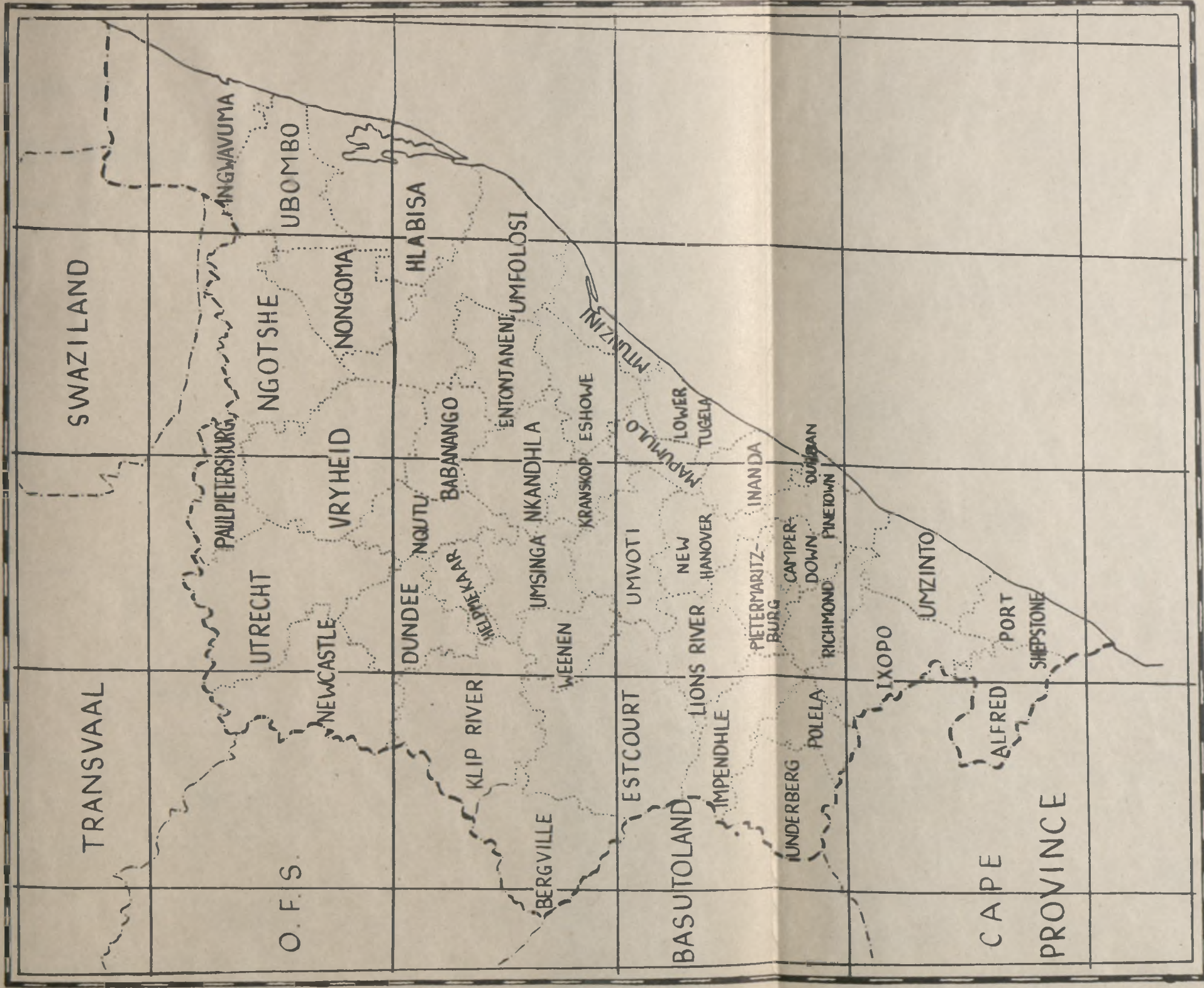




CAPE (MIDLANDS)

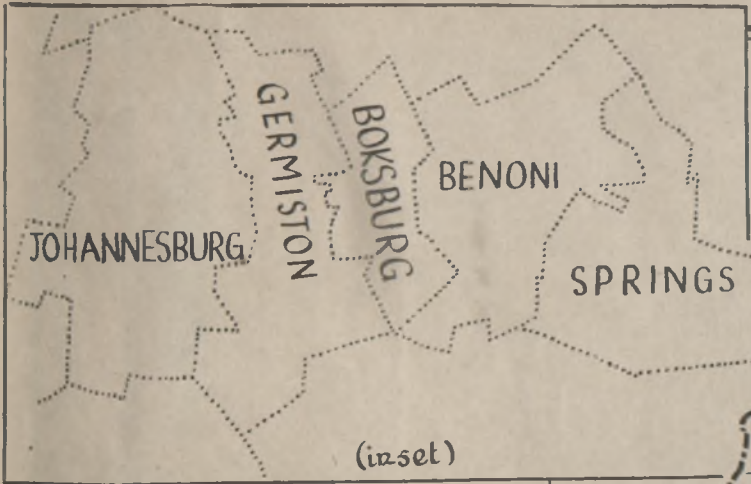
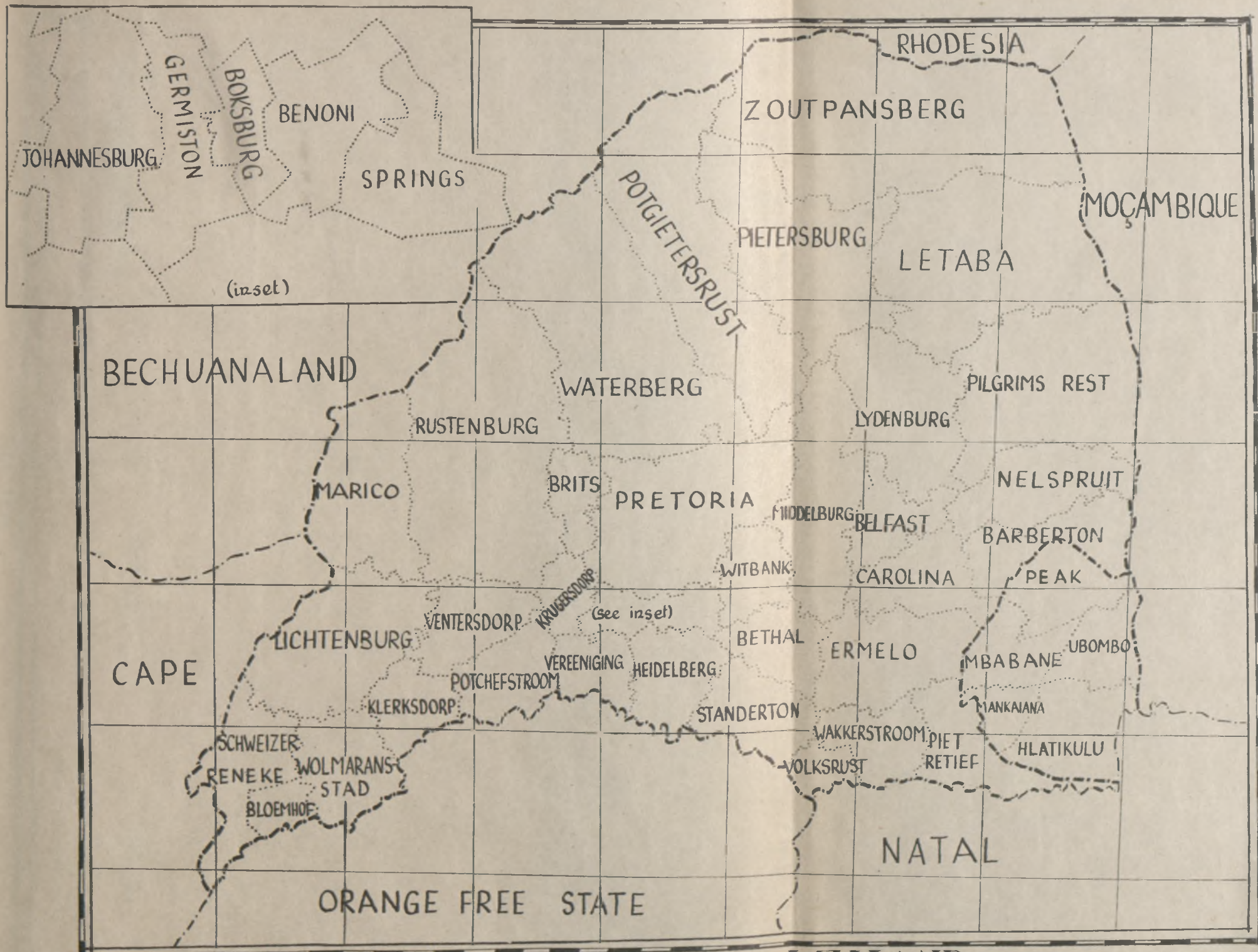


CAPE PROVINCE (EAST)

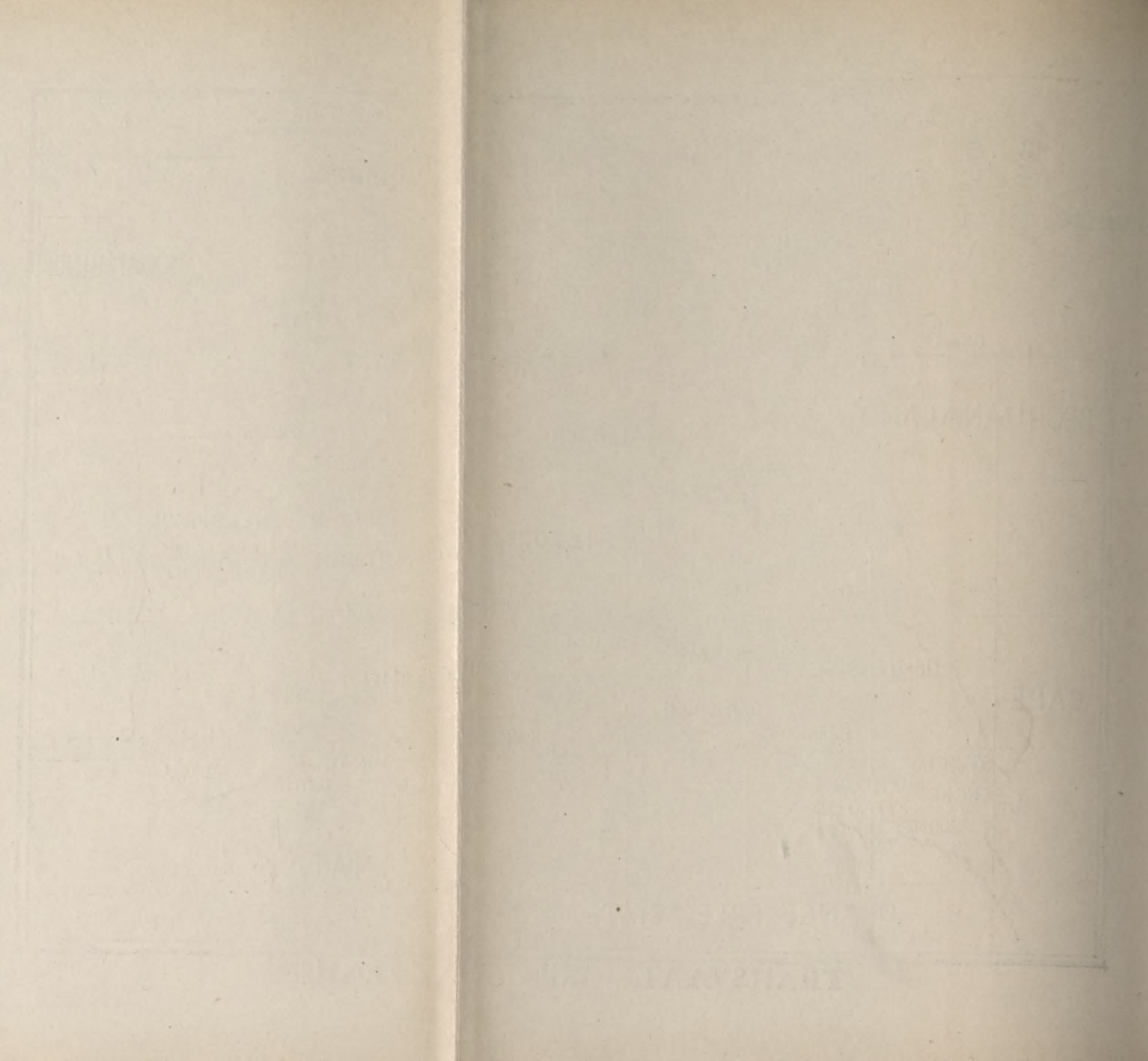


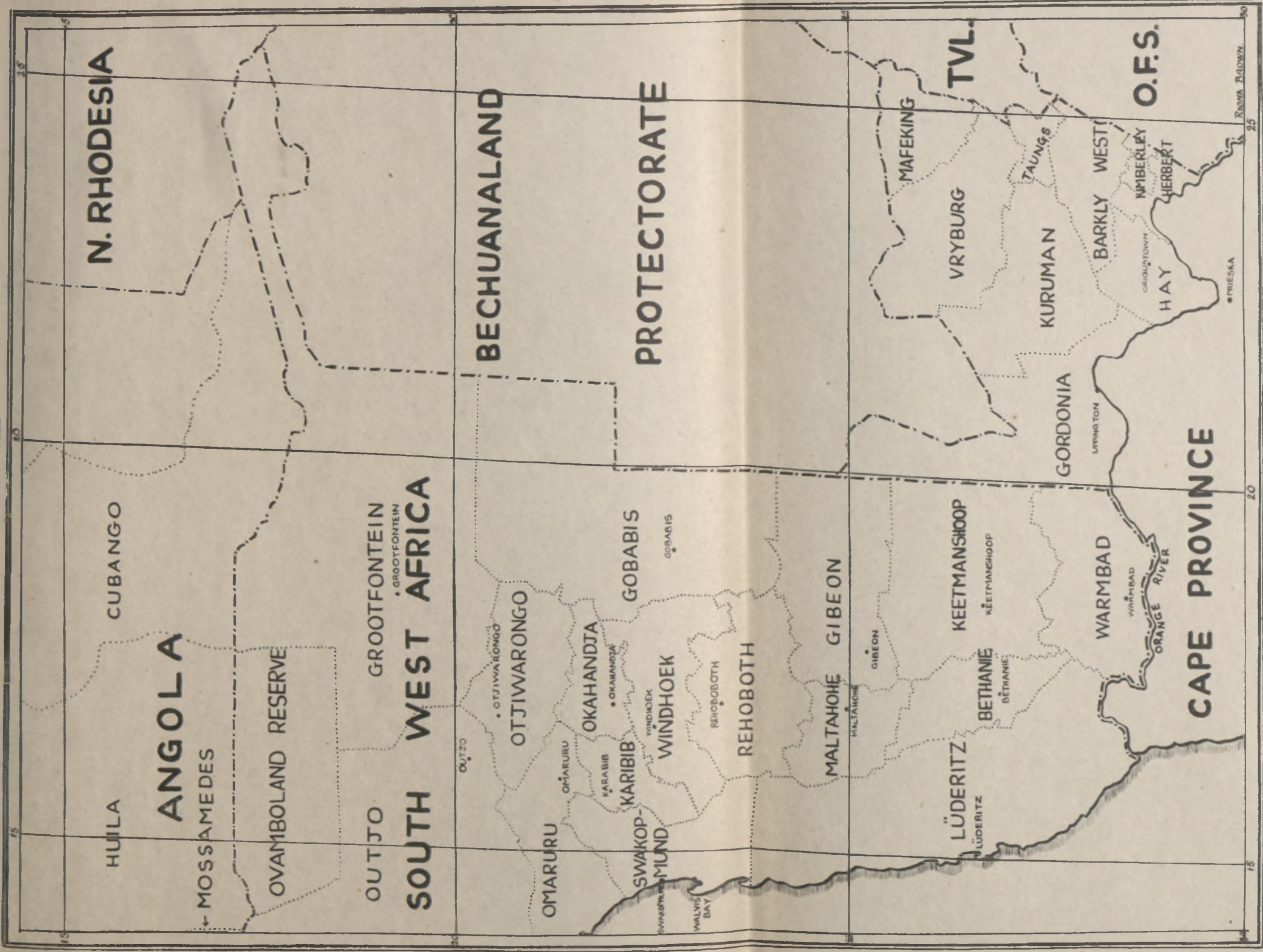
NATAL





TRANSVAAL AND SWAZILAND





N. RHODESIA

CUBANGO

HUILA

ANGOLA

MOSSAMEDES

OVAMBOLAND RESERVE

OUTJO

GROOTFONTEIN
GROOTFONTEIN

SOUTH WEST AFRICA

OUTJO

OTJIWARONGO
OTJIWARONGO

OMARURU

OMARURU

KARABIB

KARIBIB

OKAHANDJA
OKAHANDJA

SWAKOP-
MUND

SWAKOP-
MUND

WINDHOEK

WINDHOEK

REHOBOTH

REHOBOTH

REHOBOTH

MALTAHOHE
GIBEON

MALTAHOHE

GIBEON

LÜDERITZ

LÜDERITZ

BETHANIE
BETHANIE

BETHANIE

KEETMANSHOOP
KEETMANSHOOP

KEETMANSHOOP

WARMBAD
WARMBAD

WARMBAD

ORANGE RIVER

GORDONIA

UPPING TON

HAY

ORIGINATION TOWN

NUMBERLEY

HERBERT

•PRIESKA

BECHUANALAND

PROTECTORATE

MAFEKING

VRYBURG

TVL.

TAUNGS

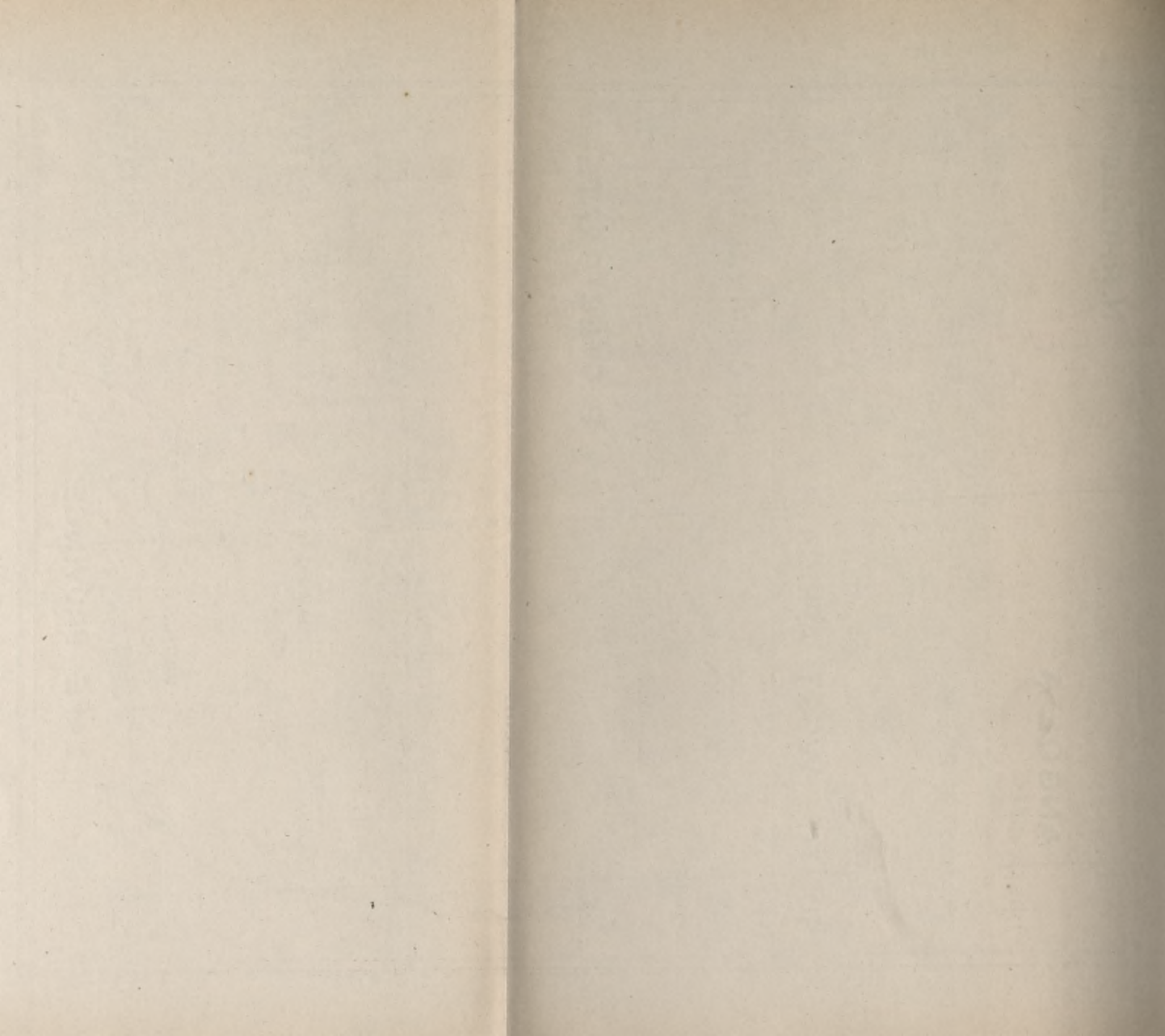
KURUMAN

BARKLY WEST

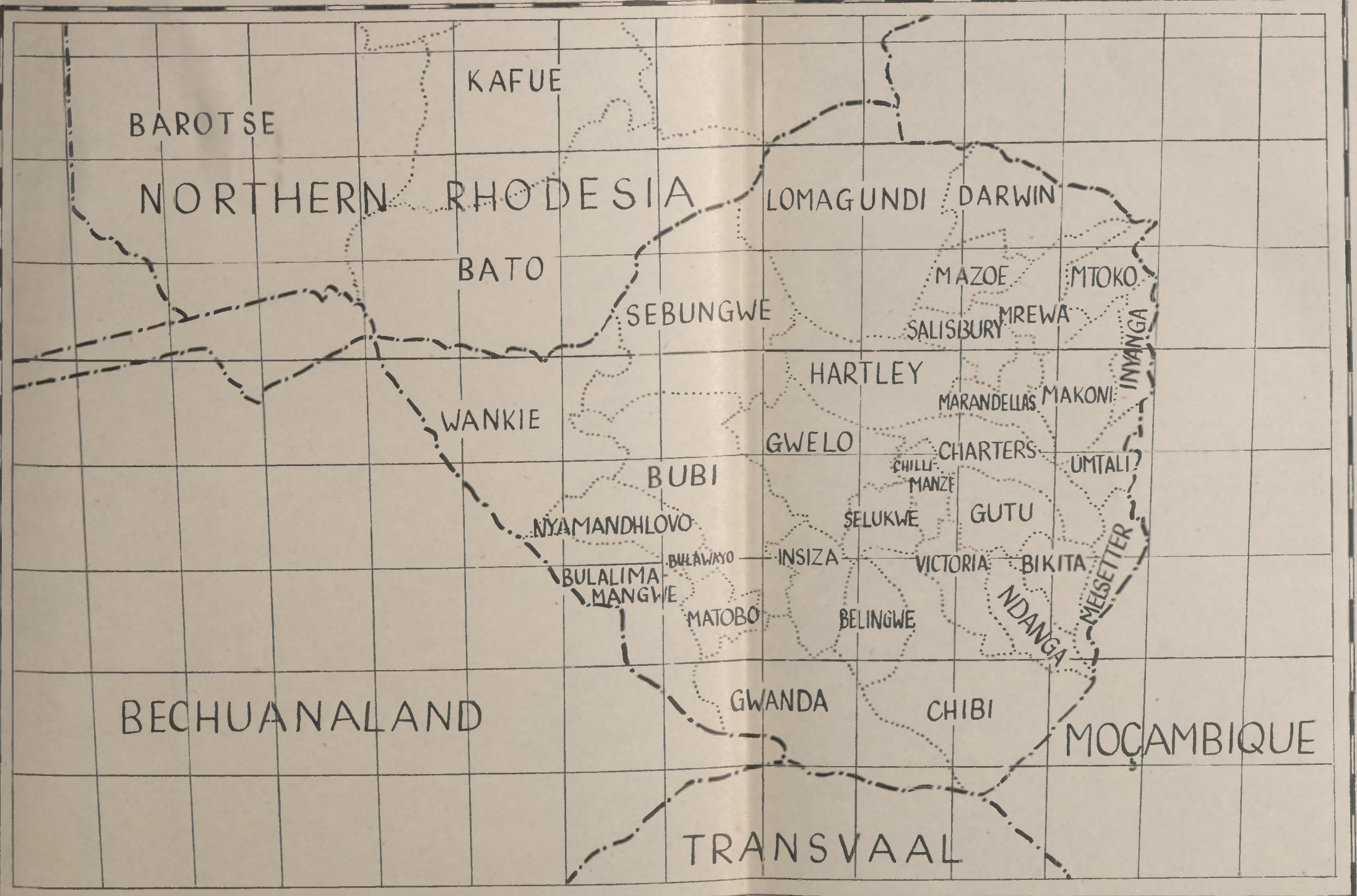
O.F.S.

RAINA BROWN

CAPE PROVINCE



MAP IX



SOUTHERN RHODESIA

