

ASTERACEAE

DICOMA PICTA, THE CORRECT NAME FOR *CYPSELODONTIA ECKLONIANA*

In 1838 De Candolle described the genus *Cypselodontia* with one species, *C. eckloniana* DC. (Figure 4) from the Uitenhage District in Eastern Cape (Figure 5). Since then, no specimen of this taxon was collected or identified in any South African herbarium. Several authors referred to the genus (Harvey 1865; Bentham 1873; Hoffmann 1889; Marloth 1932; Phillips 1951; Dyer 1975; Herman *et al.* 2000; Herman 2003) but Bremer (1994), in his massive work on the genera of the Asteraceae, did not mention the genus. When a previous

manuscript on the subject came back from referees, it was pointed out that *Cypselodontia* had already been sunk under *Dicoma*! It could not be established who was the first person to place the genus in synonymy, but in an appendix containing an alphabetical list to genera in *The biology and chemistry of the Compositae*, vol. 2, edited by Heywood *et al.* (1977), *Cypselodontia* was placed in synonymy with *Dicoma* as *Dicoma picta* (Thunb.) Druce (Figure 6). The introductory sentence to this appendix stated that 'the genera as recognized by the authors of the

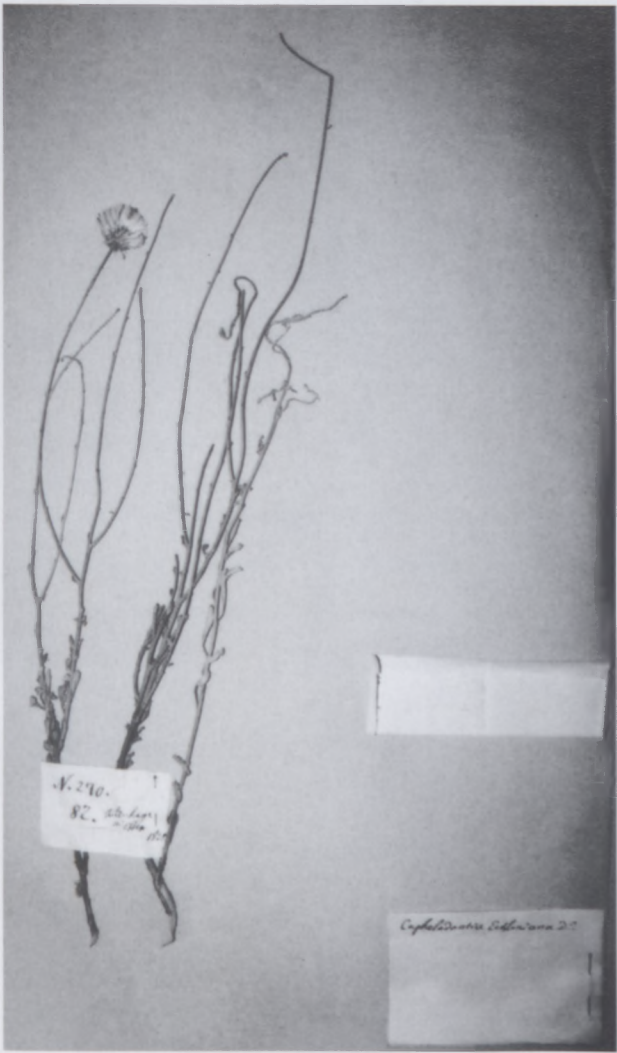


FIGURE 4.—*Cypselodontia eckloniana* in the Geneve Herbarium (G-DC), Ecklon 270.

various tribal reviews, as given in this volume,'. A.L. Cabrera compiled the chapter on the Mutisieae (pp. 1040–1066), but nowhere did he state the synonymy of *Cypselodontia*.

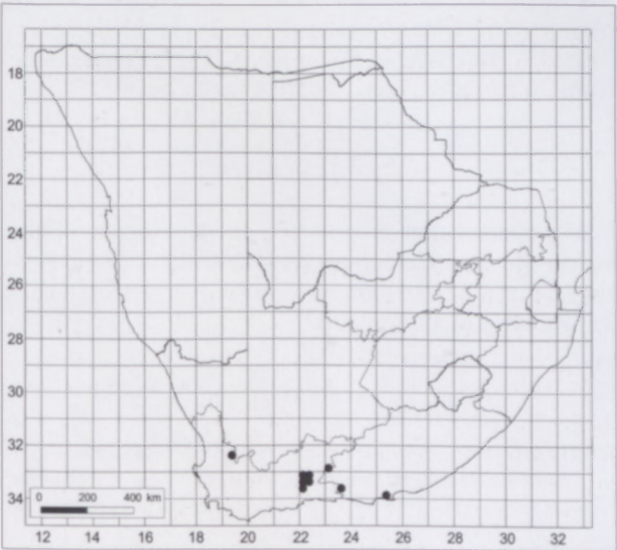


FIGURE 5.—Distribution of *Dicoma picta* in southern Africa.



FIGURE 6.—Portion of a *Dicoma picta* specimen in the National Herbarium, Pretoria (PRE), collected by Erasmus ex Marloth 13720.

In view of the obscure publication of the synonymy and because it has been overlooked for so many years, it was decided to publish this short note for general information:

***Dicoma picta* (Thunb.) Druce** in Report of the Botanical Exchange Club of the British Isles 1916: 619 (1917); Wilson: 385 (1923); N.Netnou & P.P.J.Herman: 210 (2003). Type: Cape, Thunberg, no further information.

Leyssera picta Thunb., Prodrum plantarum capensium 2: 160 (1800).

Cypselodontia eckloniana DC.: 286 (1838); Harv.: 123 (1865), Benth.: 332 (1873), O.Hoffm.: 204 (1889), Marloth: 236 (1932), E.Phillips: 806, 807 (1951); R.A.Dyer: 690 (1975); P.P.J.Herman et al.:

132 (2000); P.P.J. Herman: 209 (2003). Type: Eastern Cape, Uitenhage District, *Ecklon 270* (G-DC, holo.!; PRE, photo!).

Dicoma radiata Less.: 278 (1830). Type: Cape, *Mundt & Maire*, no further information.

ACKNOWLEDGEMENTS

Mrs S. Brink is thanked for the scanning of the photographs and herbarium material. Ms H. Steyn is thanked for the distribution map, and the referees for valuable comments on the first draft of this manuscript.

REFERENCES

- BENTHAM, G. 1873. Compositae. In G. Bentham & J.D. Hooker, *Genera plantarum* 2. Reeve, London.
- BREMER, K. 1994. *Asteraceae, cladistics and classification*. Timber Press, Portland, Oregon.
- DE CANDOLLE, A.P. 1838. Mantissa Compositarum. *Prodromus* 7,1: 286. Treuttel & Würtz, Paris.
- DRUCE, G.C. 1917. Nomenclatorial notes: chiefly African and Australian. Report for 1916. *Report of the Botanical Exchange Club of the British Isles* 1916: 601–653.
- DYER, R.A. 1975. *The genera of southern African flowering plants*, vol. 1: 690. Botanical Research Institute, Pretoria.
- HARVEY, W.H. 1865. Compositae. *Flora capensis* 3: 123, 124.
- HERMAN, P.P.J. 2003. *Cypselodontia* DC. In G. Germishuizen & N.L. Meyer, Plants of southern Africa: an annotated checklist. *Strelitzia* 14: 209. National Botanical Institute, Pretoria.
- HERMAN, P.P.J., RETIEF, E., KOEKEMOER, M. & WELMAN, W.G. 2000. Asteraceae. In O.A. Leistner, Seed plants of southern Africa: families and genera. *Strelitzia* 10: 132. National Botanical Institute, Pretoria.
- HEYWOOD, V.H., HARBORNE, J.B. & TURNER, B.L. (eds). 1977. *The biology and chemistry of the Compositae*, vol. 2. Academic Press, London.
- HOFFMANN, K.A.O. 1889. Compositae. *Die natürlichen Pflanzenfamilien* 4,5: 87–387.
- LESSING, C.F. 1830. De synanthereis herbarii regii berolinensis. *Linnaea* 5: 278.
- MARLOTH, H.W.R. 1932. *The flora of South Africa*, vol. 3. Weldon & Wesley, Cape Town.
- NETNOU, N. & HERMAN, P.P.J. 2003. *Dicoma* Cass. In G. Germishuizen & N.L. Meyer, Plants of southern Africa: an annotated checklist. *Strelitzia* 14: 209, 210. National Botanical Institute, Pretoria.
- PHILLIPS, E.P. 1951. The genera of South African flowering plants, edn 2. *Memoirs of the Botanical Survey of South Africa* No. 25: 806, 807.
- THUNBERG, C.P. 1800. *Prodromus plantarum capensium* Pars 2. Edman, Uppsala.
- WILSON, F.C. 1923. Revision of the genus *Dicoma*. *Kew Bulletin* 1923: 377–388.

P.P.J. HERMAN* and M. KOEKEMOER*

* National Botanical Institute, Private Bag X101, 0001 Pretoria.
MS. received: 2004-02-20.